



**Round dies**

**Hexagon die nuts**



## Round dies / Hexagon die nuts



### HSS Dies and nuts

- Round dies and Hexagon die nuts for general use
- for non abrasive materials up to 800 N/mm<sup>2</sup>
- Round dies for unalloyed and low alloyed steel

### Application:

- Round dies and Hexagon die nuts with high cutting ability
- for abrasive materials up to 1200 N/mm<sup>2</sup>
- Round dies for INOX (stainless steel)
- Round dies and hexagon die nuts, gun nosed

## M (metric)



### P.V.99 Hexagon die nuts (set of 7 pcs.) (49520)

DIN standard HSS M 3 - M 12

Type of thread	Standard	Material	Packing	Size
metric ISO thread DIN 13	DIN standard	HSS-G	in metal case	Diameter M 3 - 12

### Application/ for general use:

- non abrasive material up to 800 N/mm<sup>2</sup>
- unalloyed and low alloyed steel
- small, handy set for standard application
- the most popular diameter together in one case
- Hexagon die nuts acc. to DIN 382

All threading tools, threading tool holder and accessories can also be ordered separately

### Contents:

### Art. -No.

1x HSS Hexagon die nut M 3	<a href="#">27126</a>
1x HSS Hexagon die nut M 4	<a href="#">27130</a>
1x HSS Hexagon die nut M 5	<a href="#">27134</a>
1x HSS Hexagon die nut M 6	<a href="#">27138</a>
1x HSS Hexagon die nut M 8	<a href="#">27142</a>
1x HSS Hexagon die nut M 10	<a href="#">27146</a>
1x HSS Hexagon die nut M 12	<a href="#">27150</a>



## P.V.97 Round dies (set of 7 pcs.) (49521)

DIN standard HSS M 3 - M 12

Type of thread	Standard	Material	Packing	Size
metric ISO thread DIN 13	DIN standard	HSS-G	in metal case	Diameter M 3 - 12

### Application/ for general use:

- › non abrasive material up to 800 N/mm<sup>2</sup>
- › unalloyed and low alloyed steel
- › small, handy set for standard application
- › the most popular diameter together in one case

All threading tools, threading tool holder and accessories can also be ordered separately

### Contents:

### Art. -No.

1x HSS Round die M 3	<a href="#">27426</a>
1x HSS Round die M 4	<a href="#">27430</a>
1x HSS Round die M 5	<a href="#">27434</a>
1x HSS Round die M 6	<a href="#">27438</a>
1x HSS Round die M 8	<a href="#">27442</a>
1x HSS Round die M 10	<a href="#">27446</a>
1x HSS Round die M 12	<a href="#">27450</a>



## P.V.98 Round dies (set of 7 pcs.) (49522)

DIN standard HSS-E M 3 - M 12

Type of thread	Standard	Material	Packing	Size
metric ISO thread DIN 13	DIN standard	HSS-E	in metal case	Diameter M 3 - 12

### Advantages:

- › high cutting ability
- › easy cut
- › uninterrupted swarf flow in direction of feed
- › prevents jaming of swarf
- › small, handy set for standard application
- › the most popular dimensions in one case

### Application:

- › abrasive material up to 1200 N/mm<sup>2</sup>
- › stainless steel
- › and for general use
- › HSS-E Round dies acc. to DIN 223 (DIN EN 22568)

All threading tools, threading tool holder and accessories can also be ordered separately

### Contents:

### Art. -No.

1x HSS-E Round die M 3	<a href="#">57426</a>
1x HSS-E Round die M 4	<a href="#">57430</a>
1x HSS-E Round die M 5	<a href="#">57434</a>
1x HSS-E Round die M 6	<a href="#">57438</a>
1x HSS-E Round die M 8	<a href="#">57442</a>
1x HSS-E Round die M 10	<a href="#">57446</a>
1x HSS-E Round die M 12	<a href="#">57450</a>



## P.V.92 Round dies (set of 8 pcs.) (49525)

DIN standard HSS M 3 - M 12

Type of thread	Standard	Material	Packing	Size
metric ISO thread DIN 13	DIN standard	HSS	in metal case	Diameter M 3 - 12

### Contents:

### Art. -No.

1x Round Dies, HSS-G, M 3 x 0.5	<a href="#">27826</a>
1x Round Dies, HSS-G, M 4 x 0.7	<a href="#">27830</a>
1x Round Dies, HSS-G, M 5 x 0.8	<a href="#">27834</a>
1x Round Dies, HSS-G, M 6 x 1.0	<a href="#">27838</a>
1x Round Dies, HSS-G, M 8 x 1.25	<a href="#">27842</a>
1x Round Dies, HSS-G, M 10 x 1.5	<a href="#">27846</a>
1x Round Dies, HSS-G, M 12 x 1.75	<a href="#">27850</a>

All threading tools, threading tool holder and accessories can also be ordered separately



## P.V.14 Round dies (set of 19 pcs.) incl. guides (49599)

M 3 - M 12

Type of thread	Standard	Material	Packing	Size
metric ISO thread DIN 13	DIN standard	HSS-E	in metal case	Diameter M 3 - 12

### Contents:

### Art. -No.

1x HSS Round die M 3	<a href="#">27426</a>
1x HSS Round die M 4	<a href="#">27430</a>
1x HSS Round die M 5	<a href="#">27434</a>
1x HSS Round die M 6	<a href="#">27438</a>
1x HSS Round die M 8	<a href="#">27442</a>
1x HSS Round die M 10	<a href="#">27446</a>
1x HSS Round die M 12	<a href="#">27450</a>
1x Guides for round dies (set of 7 pcs.) M 3 - M 12	15100
1x Die stock, zinc die cast 20x5 mm	<a href="#">15002</a>
1x Die stock, zinc die cast 20x7 mm	<a href="#">15003</a>
1x Die stock, zinc die cast 25x9 mm	<a href="#">15004</a>
1x Die stock, zinc die cast 30x11 mm	<a href="#">15005</a>
1x Die stock, zinc die cast 38x14 mm	<a href="#">15007</a>

### Application/ for general use:

- > non abrasive material up to 800 N/mm<sup>2</sup>
- > unalloyed and low alloyed steel
- > small, handy set for standard application
- > the most popular diameter together in one case
- > 7 Guides for round dies
- > HSS Round dies acc. to DIN 223 (DIN EN 22568)

All threading tools, threading tool holder and accessories can also be ordered separately



## Round dies

DIN 223 (DIN EN 22568) HSS-G - M + HSS-G - M + split Form A HSS-G M

Type of thread: metric ISO-thread DIN 13

Tolerance: 6g

Variants (56/7/12):

### Application/ for general use:

- > non abrasive material up to 800 N/mm<sup>2</sup>
- > unalloyed and low alloyed steel

#### DIN 223



#### HSS



#### Form A



D - mm DIN 223	Ø - o / d	Art. -No.	D - mm DIN 223	Ø - o / d	Art. -No.	D - mm DIN 223	Ø - o / d	Art. -No.
M 1 x 0.25	16 x 5	<a href="#">27402</a>	M 7 x 1.0	25 x 9	<a href="#">27440</a>	M 42 x 4.5	75 x 30	<a href="#">27486</a>
M 1.1 x 0.25	16 x 5	<a href="#">27404</a>	M 8 x 1.25	25 x 9	<a href="#">27442</a>	M 45 x 4.5	90 x 36	<a href="#">27488</a>
M 1.2 x 0.25	16 x 5	<a href="#">27406</a>	M 9 x 1.25	25 x 9	<a href="#">27444</a>	M 48 x 5.0	90 x 36	<a href="#">27490</a>
M 1.4 x 0.3	16 x 5	<a href="#">27408</a>	M 10 x 1.5	30 x 11	<a href="#">27446</a>	M 52 x 5.0	90 x 36	<a href="#">27492</a>
M 1.6 x 0.35	16 x 5	<a href="#">27410</a>	M 11 x 1.5	30 x 11	<a href="#">27448</a>	M 56 x 5.5	105 x 36	<a href="#">27494</a>
M 1.7 x 0.35	16 x 5	<a href="#">27412</a>	M 12 x 1.75	38 x 14	<a href="#">27450</a>	M 60 x 5.5	105 x 36	<a href="#">27496</a>
M 1.8 x 0.35	16 x 5	<a href="#">27414</a>	M 14 x 2.0	38 x 14	<a href="#">27454</a>	M 64 x 6.0	120 x 36	<a href="#">27498</a>
M 2 x 0.4	16 x 5	<a href="#">27416</a>	M 15 x 2.0	38 x 14	<a href="#">27456</a>	M 68 x 6.0	120 x 36	<a href="#">27499</a>
M 2.2 x 0.45	16 x 5	<a href="#">27418</a>	M 16 x 2.0	45 x 18	<a href="#">27458</a>	M 72 x 6.0	120 x 36	<a href="#">28280</a>
M 2.3 x 0.4	16 x 5	<a href="#">27420</a>	M 18 x 2.5	45 x 18	<a href="#">27462</a>	M 76 x 6.0	120 x 36	<a href="#">28281</a>
M 2.5 x 0.45	16 x 5	<a href="#">27422</a>	M 19 x 2.5	45 x 18	<a href="#">27464</a>	M 80 x 6.0	120 x 36	<a href="#">28282</a>
M 2.6 x 0.45	16 x 5	<a href="#">27424</a>	M 20 x 2.5	45 x 18	<a href="#">27466</a>	M 84 x 6.0	130 x 36	<a href="#">28283</a>
M 3 x 0.5	20 x 5	<a href="#">27426</a>	M 22 x 2.5	55 x 22	<a href="#">27470</a>	M 88 x 6.0	140 x 36	<a href="#">28284</a>
M 3.5 x 0.6	20 x 5	<a href="#">27428</a>	M 24 x 3.0	55 x 22	<a href="#">27474</a>	M 90 x 6.0	140 x 36	<a href="#">28285</a>
M 4 x 0.7	20 x 5	<a href="#">27430</a>	M 27 x 3.0	65 x 25	<a href="#">27476</a>	M 92 x 6.0	140 x 36	<a href="#">28286</a>
M 4.5 x 0.75	20 x 7	<a href="#">27432</a>	M 30 x 3.5	65 x 25	<a href="#">27478</a>	M 96 x 6.0	140 x 36	<a href="#">28287</a>
M 5 x 0.8	20 x 7	<a href="#">27434</a>	M 33 x 3.5	65 x 25	<a href="#">27480</a>	M 100 x 6.0	150 x 36	<a href="#">28288</a>
M 5.5 x 0.9	20 x 7	<a href="#">27436</a>	M 36 x 4.0	65 x 25	<a href="#">27482</a>			
M 6 x 1.0	20 x 7	<a href="#">27438</a>	M 39 x 4.0	75 x 30	<a href="#">27484</a>			

D - mm HSS	Ø - o / d	Art. -No.
M 3 x 0.5	25 x 9	<a href="#">27826</a>
M 4 x 0.7	25 x 9	<a href="#">27830</a>
M 5 x 0.8	25 x 9	<a href="#">27834</a>
M 6 x 1.0	25 x 9	<a href="#">27838</a>
M 8 x 1.25	25 x 9	<a href="#">27842</a>
M 10 x 1.5	25 x 9	<a href="#">27846</a>
M 12 x 1.75	25 x 9	<a href="#">27850</a>

D - mm Form A	Ø - o / d	Art. -No.	D - mm Form A	Ø - o / d	Art. -No.
M 3 x 0.5	25.4	<a href="#">27926</a>	M 10 x 1.5	25.4	<a href="#">27946</a>
M 4 x 0.7	25.4	<a href="#">27930</a>	M 12 x 1.75	25.4	<a href="#">27950</a>
M 5 x 0.8	25.4	<a href="#">27934</a>	M 14 x 2.0	38.1	<a href="#">27954</a>
M 6 x 1.0	25.4	<a href="#">27938</a>	M 16 x 2.0	38.1	<a href="#">27958</a>
M 7 x 1.0	25.4	<a href="#">27940</a>	M 18 x 2.5	38.1	<a href="#">27962</a>
M 8 x 1.25	25.4	<a href="#">27942</a>	M 20 x 2.5	38.1	<a href="#">27966</a>





## Round dies

gun nosed DIN 223 (DIN EN 22568) HSS-E - M  
+ DIN 223 (DIN EN 22568) HSS-G - M

Type of thread: metric ISO-thread DIN 13

Tolerance: 6g/6e

Variants (15/11):

### Advantages\*:

- › high cutting ability
- › easy cut
- › uninterrupted swarf flow in direction of feed
- › prevents jamming of swarf



### Application:

- › abrasive/non abrasive\* material up to 1200 N/mm<sup>2</sup>/800 N/mm<sup>2</sup>\*
- › stainless steel\*
- › unalloyed and low alloyed steel
- › and for general use



D - mm	Ø - o / d	Art.-No.
<b>gun nosed*</b>		
M 3 x 0.5	20 x 5	<a href="#">57426</a>
M 4 x 0.7	20 x 5	<a href="#">57430</a>
M 5 x 0.8	20 x 7	<a href="#">57434</a>
M 6 x 1.0	20 x 7	<a href="#">57438</a>
M 8 x 1.25	25 x 9	<a href="#">57442</a>
M 10 x 1.5	30 x 11	<a href="#">57446</a>
M 12 x 1.75	38 x 14	<a href="#">57450</a>
M 14 x 2.0	38 x 14	<a href="#">57454</a>
M 16 x 2.0	45 x 18	<a href="#">57458</a>
M 18 x 2.5	45 x 18	<a href="#">57462</a>
M 20 x 2.5	45 x 18	<a href="#">57466</a>
M 22 x 2.5	55 x 22	<a href="#">57470</a>
M 24 x 3.0	55 x 22	<a href="#">57474</a>
M 27 x 3.0	65 x 25	<a href="#">57476</a>
M 30 x 3.5	65 x 25	<a href="#">57478</a>

D - mm	Ø - o / d	Art.-No.
M 3 x 0.5	20 x 5	<a href="#">27503</a>
M 4 x 0.7	20 x 5	<a href="#">27505</a>
M 5 x 0.8	20 x 7	<a href="#">27507</a>
M 6 x 1.0	20 x 7	<a href="#">27509</a>
M 8 x 1.25	25 x 9	<a href="#">27511</a>
M 10 x 1.5	30 x 11	<a href="#">27513</a>
M 12 x 1.75	38 x 14	<a href="#">27515</a>
M 14 x 2.0	38 x 14	<a href="#">27516</a>
M 16 x 2.0	45 x 18	<a href="#">27517</a>
M 18 x 2.5	45 x 18	<a href="#">27518</a>
M 20 x 2.5	45 x 18	<a href="#">27519</a>



## Hexagon die nuts

DIN 382 HSS - M

Type of thread: metric ISO-thread DIN 13

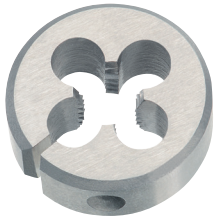
Tolerance: 6g

Variants (30):

### Application:

For cleaning and repairing damaged threads and for general use in awkward places.

D - mm	Width across flats - mm	Art.-No.
M 3 x 0.5	19 x 5	<a href="#">27126</a>
M 3.5 x 0.6	19 x 5	<a href="#">27128</a>
M 4 x 0.7	19 x 5	<a href="#">27130</a>
M 5 x 0.8	19 x 7	<a href="#">27134</a>
M 6 x 1.0	19 x 7	<a href="#">27138</a>
M 7 x 1.0	22 x 9	<a href="#">27140</a>
M 8 x 1.25	22 x 9	<a href="#">27142</a>
M 9 x 1.25	22 x 9	<a href="#">27144</a>
M 10 x 1.5	27 x 11	<a href="#">27146</a>
M 11 x 1.5	27 x 11	<a href="#">27148</a>
M 12 x 1.75	36 x 14	<a href="#">27150</a>
M 14 x 2.0	36 x 14	<a href="#">27154</a>
M 16 x 2.0	41 x 18	<a href="#">27158</a>
M 18 x 2.5	41 x 18	<a href="#">27162</a>
M 20 x 2.5	41 x 18	<a href="#">27166</a>
M 22 x 2.5	50 x 22	<a href="#">27170</a>
M 24 x 3.0	50 x 22	<a href="#">27174</a>
M 27 x 3.0	60 x 25	<a href="#">27176</a>
M 30 x 3.5	60 x 25	<a href="#">27178</a>
M 33 x 3.5	60 x 25	<a href="#">27180</a>
M 36 x 4.0	60 x 25	<a href="#">27182</a>
M 39 x 4.0	70 x 30	<a href="#">27184</a>
M 42 x 4.5	70 x 30	<a href="#">27186</a>
M 45 x 4.5	85 x 36	<a href="#">27188</a>
M 48 x 5.0	85 x 36	<a href="#">27190</a>
M 52 x 5.0	85 x 36	<a href="#">27192</a>
M 56 x 5.5	100 x 36	<a href="#">27194</a>
M 60 x 5.5	100 x 36	<a href="#">27196</a>
M 64 x 6.0	100 x 36	<a href="#">27198</a>
M 68 x 6.0	115 x 36	<a href="#">27199</a>



## Round dies

JIS B-4451 HSS - M

Type of thread: metric ISO-thread DIN 13

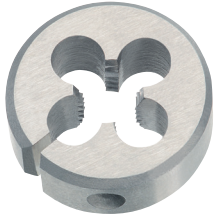
Tolerance: 6g/6e

Variants (39/31):

**Application:** > non abrasive material up to 800 N/mm<sup>2</sup> > unalloyed and low alloyed steel

D - mm	Ø - o / d	Art.-No.	D - mm	Ø - o / d	Art.-No.
M 3 x 0.5	25	<a href="#">90022</a>	M 16 x 1.5	38	<a href="#">90074</a>
M 3.5 x 0.6	25	<a href="#">90024</a>	M 16 x 1.5	50	<a href="#">90075</a>
M 4 x 0.7	25	<a href="#">90026</a>	M 16 x 1.0	38	<a href="#">90076</a>
M 5 x 0.8	25	<a href="#">90030</a>	M 16 x 1.0	50	<a href="#">90077</a>
M 5 x 0.8	38	<a href="#">90031</a>	M 18 x 2.5	50	<a href="#">90078</a>
M 6 x 1.0	25	<a href="#">90038</a>	M 18 x 1.5	50	<a href="#">90080</a>
M 6 x 1.0	38	<a href="#">90039</a>	M 18 x 1.0	50	<a href="#">90082</a>
M 7 x 1.0	25	<a href="#">90044</a>	M 20 x 2.5	50	<a href="#">90084</a>
M 7 x 1.0	38	<a href="#">90045</a>	M 20 x 1.5	50	<a href="#">90086</a>
M 8 x 1.25	25	<a href="#">90046</a>	M 20 x 1.0	50	<a href="#">90088</a>
M 8 x 1.25	38	<a href="#">90047</a>	M 22 x 2.5	50	<a href="#">90090</a>
M 8 x 1.0	25	<a href="#">90048</a>	M 22 x 2.5	65	<a href="#">90091</a>
M 8 x 1.0	38	<a href="#">90049</a>	M 22 x 1.5	50	<a href="#">90092</a>
M 8 x 0.75	25	<a href="#">90050</a>	M 22 x 1.5	50	<a href="#">90093</a>
M 8 x 0.75	38	<a href="#">90051</a>	M 22 x 1.0	65	<a href="#">90094</a>
M 10 x 1.25	25	<a href="#">90052</a>	M 22 x 1.0	50	<a href="#">90095</a>
M 10 x 1.5	25	<a href="#">90054</a>	M 24 x 3.0	65	<a href="#">90096</a>
M 10 x 1.5	38	<a href="#">90055</a>	M 24 x 3.0	50	<a href="#">90097</a>
M 10 x 1.0	25	<a href="#">90056</a>	M 24 x 1.5	65	<a href="#">90098</a>
M 10 x 1.0	38	<a href="#">90057</a>	M 24 x 1.0	65	<a href="#">90101</a>
M 10 x 1.25	38	<a href="#">90059</a>	M 27 x 3.0	65	<a href="#">90102</a>
M 12 x 1.75	38	<a href="#">90060</a>	M 27 x 2.0	50	<a href="#">90104</a>
M 12 x 1.75	50	<a href="#">90061</a>	M 27 x 1.5	65	<a href="#">90106</a>
M 12 x 1.5	38	<a href="#">90062</a>	M 30 x 3.5	65	<a href="#">90108</a>
M 12 x 1.5	50	<a href="#">90063</a>	M 30 x 1.5	65	<a href="#">90112</a>
M 12 x 1.0	38	<a href="#">90064</a>	M 33 x 3.5	65	<a href="#">90116</a>
M 12 x 1.0	50	<a href="#">90065</a>	M 33 x 1.5	65	<a href="#">90120</a>
M 14 x 2.0	38	<a href="#">90066</a>	M 36 x 4.0	65	<a href="#">90124</a>
M 14 x 2.0	50	<a href="#">90067</a>	M 36 x 1.5	65	<a href="#">90130</a>
M 14 x 1.5	38	<a href="#">90068</a>	M 8 x 1.25	50	<a href="#">90150</a>
M 14 x 1.5	50	<a href="#">90069</a>	M 10 x 1.5	50	<a href="#">90153</a>
M 14 x 1.0	38	<a href="#">90070</a>	M 10 x 1.25	50	<a href="#">90154</a>
M 14 x 1.0	50	<a href="#">90071</a>	M 10 x 1.0	50	<a href="#">90155</a>
M 16 x 2.0	38	<a href="#">90072</a>	M 12 x 1.25	50	<a href="#">90156</a>
M 16 x 2.0	50	<a href="#">90073</a>	M 14 x 1.25	50	<a href="#">90157</a>





## Round dies

BS 1127; 1950 HSS - M

Type of thread: metric ISO-thread DIN 13

Tolerance: 6g

Variants (47):

**Application:** > non abrasive material up to 800 N/mm<sup>2</sup> > unalloyed and low alloyed steel

D - mm	Ø - o / d	L1	Art.- No.	D - mm	Ø - o / d	L1	Art.- No.
M 2 x 0.4	13/16 o / d	1/4 width	<a href="#">80000</a>	M 18 x 2.5	2" o / d	5/8 width	<a href="#">80043</a>
M 2.2 x 0.45	13/16 o / d	1/4 width	<a href="#">80001</a>	M 20 x 2.5	2" o / d	5/8 width	<a href="#">80044</a>
M 2.5 x 0.45	13/16 o / d	1/4 width	<a href="#">80002</a>	M 22 x 2.5	2" o / d	5/8 width	<a href="#">80045</a>
M 3 x 0.5	13/16 o / d	1/4 width	<a href="#">80003</a>	M 24 x 3.0	2" o / d	5/8 width	<a href="#">80046</a>
M 3.5 x 0.6	13/16 o / d	1/4 width	<a href="#">80004</a>	M 27 x 3.0	3" o / d	7/8 width	<a href="#">80050</a>
M 4 x 0.7	13/16 o / d	1/4 width	<a href="#">80005</a>	M 30 x 3.5	3" o / d	7/8 width	<a href="#">80051</a>
M 4.5 x 0.47	13/16 o / d	1/4 width	<a href="#">80006</a>	M 33 x 3.5	3" o / d	7/8 width	<a href="#">80052</a>
M 5 x 0.8	13/16 o / d	3/8 width	<a href="#">80007</a>	M 36 x 4.0	3" o / d	7/8 width	<a href="#">80053</a>
M 6 x 1.0	13/16 o / d	3/8 width	<a href="#">80008</a>	M 39 x 4.0	3" o / d	7/8 width	<a href="#">80054</a>
M 7 x 1.0	13/16 o / d	3/8 width	<a href="#">80009</a>	M 42 x 4.5	4" o / d	1 width	<a href="#">80060</a>
M 5 x 0.8	1" o / d	3/8 width	<a href="#">80010</a>	M 45 x 4.5	4" o / d	1 width	<a href="#">80061</a>
M 6 x 1.0	1" o / d	3/8 width	<a href="#">80011</a>	M 48 x 5.0	4" o / d	1 width	<a href="#">80062</a>
M 7 x 1.0	1" o / d	3/8 width	<a href="#">80012</a>				
M 8 x 1.25	1" o / d	3/8 width	<a href="#">80013</a>				
M 9 x 1.25	1" o / d	3/8 width	<a href="#">80014</a>				
M 10 x 1.5	1" o / d	3/8 width	<a href="#">80015</a>				
M 12 x 1.75	1" o / d	3/8 width	<a href="#">80016</a>				
M 6 x 1.0	1.5/16 o / d	7/16 width	<a href="#">80020</a>				
M 7 x 1.0	1.5/16 o / d	7/16 width	<a href="#">80021</a>				
M 8 x 1.25	1.5/16 o / d	7/16 width	<a href="#">80022</a>				
M 9 x 1.25	1.5/16 o / d	7/16 width	<a href="#">80023</a>				
M 10 x 1.5	1.5/16 o / d	7/16 width	<a href="#">80024</a>				
M 11 x 1.5	1.5/16 o / d	7/16 width	<a href="#">80025</a>				
M 12 x 1.75	1.5/16 o / d	7/16 width	<a href="#">80026</a>				
M 14 x 2.0	1.5/16 o / d	7/16 width	<a href="#">80027</a>				
M 10 x 1.5	1.1/2 o / d	1/2 width	<a href="#">80030</a>				
M 11 x 1.5	1.1/2 o / d	1/2 width	<a href="#">80031</a>				
M 12 x 1.75	1.1/2 o / d	1/2 width	<a href="#">80032</a>				
M 14 x 2.0	1.1/2 o / d	1/2 width	<a href="#">80033</a>				
M 16 x 2.0	1.1/2 o / d	1/2 width	<a href="#">80034</a>				
M 18 x 2.5	1.1/2 o / d	1/2 width	<a href="#">80035</a>				
M 20 x 2.5	1.1/2 o / d	1/2 width	<a href="#">80036</a>				
M 12 x 1.75	2" o / d	5/8 width	<a href="#">80040</a>				
M 14 x 2.0	2" o / d	5/8 width	<a href="#">80041</a>				
M 16 x 2.0	2" o / d	5/8 width	<a href="#">80042</a>				

D = Nominal Diameter    o / d = Outer Diameter    L1 = Overall Length



## M (metric) left hand



### Round dies, left hand (set of 19 pcs.) incl. guides (49598) M 3 LH - M 12 LH

Type of thread	Standard	Material	Packing	Size
metric ISO thread DIN 13	DIN standard	HSS-G	in metal case	Diameter M 3 - 12

#### Application/ for general use:

- › non abrasive material up to 800 N/mm<sup>2</sup>
- › unalloyed and low alloyed steel
- › small, handy set for standard application
- › the most popular diameter together in one case
- › 7 Guides for round dies
- › HSS Round dies acc. to DIN 223 (DIN EN 22568)

All threading tools, threading tool holder and accessories can also be ordered separately

#### Contents:

#### Art. -No.

1x HSS HSS Round die M 3 LH	<a href="#">27226</a>
1x HSS HSS Round die M 4 LH	<a href="#">27230</a>
1x HSS HSS Round die M 5 LH	<a href="#">27234</a>
1x HSS HSS Round die M 6 LH	<a href="#">27238</a>
1x HSS HSS Round die M 8 LH	<a href="#">27242</a>
1x HSS HSS Round die M 10 LH	<a href="#">27246</a>
1x HSS HSS Round die M 12 LH	<a href="#">27250</a>
1x Guides for round dies (set of 7 pcs.) M 3 - M 12	15100
1x Die stock, zinc die cast 20x5 mm	<a href="#">15002</a>
1x Die stock, zinc die cast 20x7 mm	<a href="#">15003</a>
1x Die stock, zinc die cast 25x9 mm	<a href="#">15004</a>
1x Die stock, zinc die cast 30x11 mm	<a href="#">15005</a>
1x Die stock, zinc die cast 38x14 mm	<a href="#">15007</a>



## Round dies, left hand

DIN 223 (DIN EN 22568) HSS-G - M LH

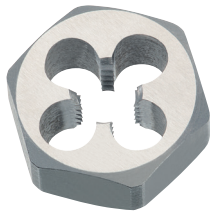
Type of thread: metric ISO-thread DIN 13

Tolerance: 6g

Variants (23):

**Application:** > non abrasive material up to 800 N/mm<sup>2</sup> > unalloyed and low alloyed steel

D - mm	Ø - o / d	Art.-No.	D - mm	Ø - o / d	Art.-No.
M 2 x 0.4	16 x 5	<a href="#">27216</a>	M 22 x 2.5	55 x 22	<a href="#">27270</a>
M 3 x 0.5	20 x 5	<a href="#">27226</a>	M 24 x 3.0	55 x 22	<a href="#">27274</a>
M 4 x 0.7	20 x 5	<a href="#">27230</a>	M 27 x 3.0	65 x 25	<a href="#">27276</a>
M 5 x 0.8	20 x 7	<a href="#">27234</a>	M 30 x 3.5	65 x 25	<a href="#">27278</a>
M 6 x 1.0	20 x 7	<a href="#">27238</a>	M 33 x 3.5	65 x 25	<a href="#">27280</a>
M 8 x 1.25	25 x 9	<a href="#">27242</a>	M 36 x 4.0	65 x 25	<a href="#">27282</a>
M 10 x 1.5	30 x 11	<a href="#">27246</a>	M 39 x 4.0	75 x 30	<a href="#">27284</a>
M 12 x 1.75	38 x 14	<a href="#">27250</a>	M 42 x 4.5	75 x 30	<a href="#">27286</a>
M 14 x 2.0	38 x 14	<a href="#">27254</a>	M 45 x 4.5	90 x 36	<a href="#">27288</a>
M 16 x 2.0	45 x 18	<a href="#">27258</a>	M 48 x 5.0	90 x 36	<a href="#">27290</a>
M 18 x 2.5	45 x 18	<a href="#">27262</a>	M 52 x 5.0	90 x 36	<a href="#">27292</a>
M 20 x 2.5	45 x 18	<a href="#">27266</a>			



## Hexagon die nuts, left hand

DIN 382 HSS - M LH

Type of thread: metric ISO-thread DIN 13

Tolerance: 6g

Variants (22):

**Application:** For cleaning and repairing damaged threads and for general use in awkward places.

D - mm	Width across flats - mm	Art.-No.	D - mm	Width across flats - mm	Art.-No.
M 3 x 0.5	19 x 5	<a href="#">28426</a>	M 22 x 2.5	50 x 22	<a href="#">28470</a>
M 4 x 0.7	19 x 5	<a href="#">28430</a>	M 24 x 3.0	50 x 22	<a href="#">28474</a>
M 5 x 0.8	19 x 7	<a href="#">28434</a>	M 27 x 3.0	60 x 25	<a href="#">28476</a>
M 6 x 1.0	19 x 7	<a href="#">28438</a>	M 30 x 3.5	60 x 25	<a href="#">28478</a>
M 8 x 1.25	22 x 9	<a href="#">28442</a>	M 33 x 3.5	60 x 25	<a href="#">28480</a>
M 10 x 1.5	27 x 11	<a href="#">28446</a>	M 36 x 4.0	60 x 25	<a href="#">28482</a>
M 12 x 1.75	36 x 14	<a href="#">28450</a>	M 39 x 4.0	70 x 30	<a href="#">28484</a>
M 14 x 2.0	36 x 14	<a href="#">28454</a>	M 42 x 4.5	70 x 30	<a href="#">28486</a>
M 16 x 2.0	41 x 18	<a href="#">28458</a>	M 45 x 4.5	85 x 36	<a href="#">28488</a>
M 18 x 2.5	41 x 18	<a href="#">28462</a>	M 48 x 5.0	85 x 36	<a href="#">28490</a>
M 20 x 2.5	41 x 18	<a href="#">28466</a>	M 52 x 5.0	85 x 36	<a href="#">28492</a>



Mf



## Round dies

DIN 223 (DIN EN 22568) HSS-G - Mf

Type of thread: metric ISO-thread DIN 13

Tolerance: 6g

Variants (267):

**Application:** > non abrasive material up to 800 N/mm<sup>2</sup> > unalloyed and low alloyed steel

D - mm	Ø - o / d	Art.-No.	D - mm	Ø - o / d	Art.-No.	D - mm	Ø - o / d	Art.-No.
M 2.5 x 0.35	16 x 5	<a href="#">26404</a>	M 13 x 0.75	38 x 10	<a href="#">26449</a>	M 21 x 1.0	45 x 14	<a href="#">26487</a>
M 2.6 x 0.35	16 x 5	<a href="#">26405</a>	M 13 x 1.0	38 x 10	<a href="#">26450</a>	M 21 x 1.5	45 x 14	<a href="#">26488</a>
M 3 x 0.35	20 x 5	<a href="#">26408</a>	M 13 x 1.5	38 x 10	<a href="#">26451</a>	M 22 x 0.5	55 x 16	<a href="#">26489</a>
M 3.5 x 0.35	20 x 5	<a href="#">26409</a>	M 14 x 0.5	38 x 10	<a href="#">26455</a>	M 22 x 0.75	55 x 16	<a href="#">26491</a>
M 4 x 0.35	20 x 5	<a href="#">26410</a>	M 14 x 0.75	38 x 10	<a href="#">26452</a>	M 22 x 1.0	55 x 16	<a href="#">26490</a>
M 4 x 0.5	20 x 5	<a href="#">26412</a>	M 14 x 1.0	38 x 10	<a href="#">26453</a>	M 22 x 1.25	55 x 16	<a href="#">26492</a>
M 4.5 x 0.5	20 x 5	<a href="#">26413</a>	M 14 x 1.25	38 x 10	<a href="#">26454</a>	M 22 x 1.5	55 x 16	<a href="#">26494</a>
M 5 x 0.5	20 x 5	<a href="#">26414</a>	M 14 x 1.5	38 x 10	<a href="#">26456</a>	M 22 x 2.0	55 x 16	<a href="#">26496</a>
M 5 x 0.75	20 x 7	<a href="#">26416</a>	M 15 x 0.75	38 x 10	<a href="#">26457</a>	M 23 x 1.0	55 x 16	<a href="#">26497</a>
M 5.5 x 0.5	20 x 5	<a href="#">26415</a>	M 15 x 1.0	38 x 10	<a href="#">26458</a>	M 23 x 1.5	55 x 16	<a href="#">26498</a>
M 6 x 0.5	20 x 5	<a href="#">26417</a>	M 15 x 1.5	38 x 10	<a href="#">26460</a>	M 24 x 0.5	55 x 16	<a href="#">26601</a>
M 6 x 0.75	20 x 7	<a href="#">26418</a>	M 16 x 0.5	45 x 14	<a href="#">26461</a>	M 24 x 0.75	55 x 16	<a href="#">26603</a>
M 7 x 0.5	25 x 9	<a href="#">26419</a>	M 16 x 0.75	45 x 14	<a href="#">26436</a>	M 24 x 1.0	55 x 16	<a href="#">26600</a>
M 7 x 0.75	25 x 9	<a href="#">26420</a>	M 16 x 1.0	45 x 14	<a href="#">26462</a>	M 24 x 1.25	55 x 16	<a href="#">26602</a>
M 8 x 0.5	25 x 9	<a href="#">26422</a>	M 16 x 1.25	45 x 14	<a href="#">26464</a>	M 24 x 1.5	55 x 16	<a href="#">26604</a>
M 8 x 0.75	25 x 9	<a href="#">26424</a>	M 16 x 1.5	45 x 14	<a href="#">26466</a>	M 24 x 2.0	55 x 16	<a href="#">26606</a>
M 8 x 1.0	25 x 9	<a href="#">26426</a>	M 17 x 1.0	45 x 14	<a href="#">26468</a>	M 25 x 1.0	55 x 16	<a href="#">26607</a>
M 9 x 0.5	25 x 9	<a href="#">26427</a>	M 17 x 1.5	45 x 14	<a href="#">26469</a>	M 25 x 1.5	55 x 16	<a href="#">26608</a>
M 9 x 0.75	25 x 9	<a href="#">26428</a>	M 18 x 0.5	45 x 14	<a href="#">26467</a>	M 26 x 1.0	55 x 16	<a href="#">26610</a>
M 9 x 1.0	25 x 9	<a href="#">26430</a>	M 18 x 0.75	45 x 14	<a href="#">26473</a>	M 26 x 1.5	55 x 16	<a href="#">26612</a>
M 10 x 0.5	30 x 11	<a href="#">26431</a>	M 18 x 1.0	45 x 14	<a href="#">26470</a>	M 26 x 2.0	55 x 16	<a href="#">26614</a>
M 10 x 0.75	30 x 11	<a href="#">26432</a>	M 18 x 1.25	45 x 14	<a href="#">26471</a>	M 27 x 1.0	65 x 18	<a href="#">26616</a>
M 10 x 1.0	30 x 11	<a href="#">26436</a>	M 18 x 1.5	45 x 14	<a href="#">26472</a>	M 27 x 1.5	65 x 18	<a href="#">26617</a>
M 10 x 1.25	30 x 11	<a href="#">26438</a>	M 18 x 2.0	45 x 14	<a href="#">26474</a>	M 27 x 2.0	65 x 18	<a href="#">26618</a>
M 11 x 1.0	30 x 11	<a href="#">26440</a>	M 19 x 1.0	45 x 14	<a href="#">26475</a>	M 28 x 1.0	65 x 18	<a href="#">26620</a>
M 11 x 1.25	30 x 11	<a href="#">26442</a>	M 19 x 1.5	45 x 14	<a href="#">26476</a>	M 28 x 1.5	65 x 18	<a href="#">26622</a>
M 12 x 0.5	38 x 10	<a href="#">26445</a>	M 20 x 0.5	45 x 14	<a href="#">26477</a>	M 28 x 2.0	65 x 18	<a href="#">26624</a>
M 12 x 0.75	38 x 10	<a href="#">26443</a>	M 20 x 0.75	45 x 14	<a href="#">26479</a>	M 29 x 1.5	65 x 18	<a href="#">26626</a>
M 12 x 1.0	38 x 10	<a href="#">26444</a>	M 20 x 1.0	45 x 14	<a href="#">26478</a>	M 30 x 1.0	65 x 18	<a href="#">26628</a>
M 12 x 1.25	38 x 10	<a href="#">26446</a>	M 20 x 1.25	45 x 14	<a href="#">26480</a>	M 30 x 1.5	65 x 18	<a href="#">26630</a>
M 12 x 1.5	38 x 10	<a href="#">26448</a>	M 20 x 1.5	45 x 14	<a href="#">26484</a>	M 30 x 2.0	65 x 18	<a href="#">26632</a>
M 13 x 0.5	38 x 10	<a href="#">26447</a>	M 20 x 2.0	45 x 14	<a href="#">26486</a>	M 30 x 2.5	65 x 18	<a href="#">26633</a>

D = Nominal Diameter    Ø / d = Outer Diameter



D - mm	Ø - o / d	Art.-No.	D - mm	Ø - o / d	Art.-No.	D - mm	Ø - o / d	Art.-No.
M 30 x 3.0	65 x 25	<a href="#">26634</a>	M 48 x 2.0	90 x 22	<a href="#">26684</a>	M 65 x 4.0	120 x 36	<a href="#">28182</a>
M 32 x 1.0	65 x 18	<a href="#">26639</a>	M 48 x 3.0	90 x 36	<a href="#">26686</a>	M 68 x 1.5	120 x 22	<a href="#">28183</a>
M 32 x 1.5	65 x 18	<a href="#">26636</a>	M 50 x 1.5	90 x 22	<a href="#">26688</a>	M 68 x 2.0	120 x 22	<a href="#">28184</a>
M 32 x 2.0	65 x 18	<a href="#">26635</a>	M 50 x 2.0	90 x 22	<a href="#">26690</a>	M 68 x 3.0	120 x 36	<a href="#">28185</a>
M 32 x 3.0	65 x 25	<a href="#">26637</a>	M 50 x 3.0	90 x 36	<a href="#">26692</a>	M 68 x 4.0	120 x 36	<a href="#">28186</a>
M 33 x 1.5	65 x 18	<a href="#">26638</a>	M 52 x 1.5	90 x 22	<a href="#">26694</a>	M 70 x 1.5	120 x 22	<a href="#">28187</a>
M 33 x 2.0	65 x 18	<a href="#">26640</a>	M 52 x 2.0	90 x 22	<a href="#">26696</a>	M 70 x 2.0	120 x 22	<a href="#">28188</a>
M 33 x 3.0	65 x 25	<a href="#">26642</a>	M 52 x 3.0	90 x 36	<a href="#">26698</a>	M 70 x 3.0	120 x 36	<a href="#">28189</a>
M 34 x 1.0	65 x 18	<a href="#">26643</a>	M 54 x 1.0	105 x 22	<a href="#">28267</a>	M 70 x 4.0	120 x 36	<a href="#">28190</a>
M 34 x 1.5	65 x 18	<a href="#">26644</a>	M 54 x 1.5	105 x 22	<a href="#">28150</a>	M 72 x 1.5	120 x 22	<a href="#">28191</a>
M 34 x 2.0	65 x 18	<a href="#">26646</a>	M 54 x 2.0	105 x 22	<a href="#">28151</a>	M 72 x 2.0	120 x 22	<a href="#">28192</a>
M 35 x 1.0	65 x 18	<a href="#">26647</a>	M 54 x 3.0	105 x 36	<a href="#">28152</a>	M 72 x 3.0	120 x 36	<a href="#">28193</a>
M 35 x 1.5	65 x 18	<a href="#">26648</a>	M 54 x 4.0	105 x 36	<a href="#">28153</a>	M 72 x 4.0	120 x 36	<a href="#">28194</a>
M 35 x 2.0	65 x 18	<a href="#">26649</a>	M 55 x 1.5	105 x 22	<a href="#">28154</a>	M 74 x 1.5	120 x 22	<a href="#">28195</a>
M 36 x 1.0	65 x 18	<a href="#">26651</a>	M 55 x 2.0	105 x 22	<a href="#">28155</a>	M 74 x 2.0	120 x 22	<a href="#">28196</a>
M 36 x 1.5	65 x 18	<a href="#">26650</a>	M 55 x 3.0	105 x 36	<a href="#">28156</a>	M 74 x 3.0	120 x 36	<a href="#">28197</a>
M 36 x 2.0	65 x 18	<a href="#">26652</a>	M 55 x 4.0	105 x 36	<a href="#">28157</a>	M 74 x 4.0	120 x 36	<a href="#">28198</a>
M 36 x 3.0	65 x 25	<a href="#">26654</a>	M 56 x 1.0	105 x 22	<a href="#">28268</a>	M 75 x 1.5	120 x 22	<a href="#">28199</a>
M 37 x 1.5	65 x 18	<a href="#">26653</a>	M 56 x 1.5	105 x 22	<a href="#">28158</a>	M 75 x 2.0	120 x 22	<a href="#">28200</a>
M 38 x 1.0	75 x 20	<a href="#">26655</a>	M 56 x 2.0	105 x 22	<a href="#">28159</a>	M 75 x 3.0	120 x 36	<a href="#">28201</a>
M 38 x 1.5	75 x 20	<a href="#">26656</a>	M 56 x 3.0	105 x 36	<a href="#">28160</a>	M 75 x 4.0	120 x 36	<a href="#">28202</a>
M 38 x 2.0	75 x 20	<a href="#">26657</a>	M 56 x 4.0	105 x 36	<a href="#">28161</a>	M 76 x 1.5	120 x 22	<a href="#">28203</a>
M 38 x 3.0	75 x 30	<a href="#">26659</a>	M 58 x 1.0	105 x 22	<a href="#">28269</a>	M 76 x 2.0	120 x 22	<a href="#">28204</a>
M 39 x 1.5	75 x 20	<a href="#">26658</a>	M 58 x 1.5	105 x 22	<a href="#">28162</a>	M 76 x 3.0	120 x 36	<a href="#">28205</a>
M 39 x 2.0	75 x 20	<a href="#">26660</a>	M 58 x 2.0	105 x 22	<a href="#">28163</a>	M 76 x 4.0	120 x 36	<a href="#">28206</a>
M 39 x 3.0	75 x 30	<a href="#">26662</a>	M 58 x 3.0	105 x 36	<a href="#">28164</a>	M 78 x 1.5	120 x 22	<a href="#">28207</a>
M 40 x 1.0	75 x 20	<a href="#">26663</a>	M 58 x 4.0	105 x 36	<a href="#">28165</a>	M 78 x 2.0	120 x 22	<a href="#">28208</a>
M 40 x 1.5	75 x 20	<a href="#">26664</a>	M 60 x 1.5	105 x 22	<a href="#">28166</a>	M 78 x 3.0	120 x 36	<a href="#">28209</a>
M 40 x 2.0	75 x 20	<a href="#">26666</a>	M 60 x 2.0	105 x 22	<a href="#">28167</a>	M 78 x 4.0	120 x 36	<a href="#">28210</a>
M 40 x 3.0	75 x 30	<a href="#">26668</a>	M 60 x 3.0	105 x 36	<a href="#">28168</a>	M 80 x 1.5	120 x 22	<a href="#">28211</a>
M 42 x 1.0	75 x 20	<a href="#">26669</a>	M 60 x 4.0	105 x 36	<a href="#">28169</a>	M 80 x 2.0	120 x 22	<a href="#">28212</a>
M 42 x 1.5	75 x 20	<a href="#">26670</a>	M 62 x 1.5	105 x 22	<a href="#">28170</a>	M 80 x 3.0	120 x 36	<a href="#">28213</a>
M 42 x 2.0	75 x 20	<a href="#">26672</a>	M 62 x 2.0	105 x 22	<a href="#">28171</a>	M 80 x 4.0	120 x 36	<a href="#">28214</a>
M 42 x 3.0	75 x 30	<a href="#">26674</a>	M 62 x 3.0	105 x 36	<a href="#">28172</a>	M 82 x 1.5	130 x 25	<a href="#">28215</a>
M 44 x 1.5	90 x 22	<a href="#">26671</a>	M 62 x 4.0	105 x 36	<a href="#">28173</a>	M 82 x 2.0	130 x 25	<a href="#">28216</a>
M 44 x 2.0	90 x 22	<a href="#">26673</a>	M 63 x 1.5	105 x 22	<a href="#">28174</a>	M 82 x 3.0	130 x 36	<a href="#">28217</a>
M 45 x 1.0	90 x 22	<a href="#">26675</a>	M 64 x 1.5	120 x 22	<a href="#">28175</a>	M 82 x 4.0	130 x 36	<a href="#">28218</a>
M 45 x 1.5	90 x 22	<a href="#">26676</a>	M 64 x 2.0	120 x 22	<a href="#">28176</a>	M 84 x 1.5	130 x 25	<a href="#">28219</a>
M 45 x 2.0	90 x 22	<a href="#">26678</a>	M 64 x 3.0	120 x 36	<a href="#">28177</a>	M 84 x 2.0	130 x 25	<a href="#">28220</a>
M 45 x 3.0	90 x 36	<a href="#">26680</a>	M 64 x 4.0	120 x 36	<a href="#">28178</a>	M 84 x 3.0	130 x 36	<a href="#">28221</a>
M 46 x 1.5	90 x 22	<a href="#">26681</a>	M 65 x 1.5	120 x 22	<a href="#">28179</a>	M 84 x 4.0	130 x 35	<a href="#">28222</a>
M 48 x 1.0	90 x 22	<a href="#">26683</a>	M 65 x 2.0	120 x 22	<a href="#">28180</a>	M 85 x 1.5	130 x 25	<a href="#">28223</a>
M 48 x 1.5	90 x 22	<a href="#">26682</a>	M 65 x 3.0	120 x 36	<a href="#">28181</a>	M 85 x 2.0	130 x 25	<a href="#">28224</a>



D - mm	Ø - o / d	Art.-No.	D - mm	Ø - o / d	Art.-No.	D - mm	Ø - o / d	Art.-No.
M 85 x 3.0	130 x 36	<a href="#">28225</a>	M 92 x 1.5	140 x 22	<a href="#">28239</a>	M 98 x 3.0	150 x 25	<a href="#">28253</a>
M 85 x 4.0	130 x 36	<a href="#">28226</a>	M 92 x 2.0	140 x 22	<a href="#">28240</a>	M 98 x 4.0	150 x 25	<a href="#">28254</a>
M 86 x 1.5	140 x 22	<a href="#">28227</a>	M 92 x 3.0	140 x 22	<a href="#">28241</a>	M 100 x 1.5	150 x 25	<a href="#">28255</a>
M 86 x 2.0	140 x 22	<a href="#">28228</a>	M 92 x 4.0	140 x 22	<a href="#">28242</a>	M 100 x 2.0	150 x 25	<a href="#">28256</a>
M 86 x 3.0	140 x 22	<a href="#">28229</a>	M 95 x 1.5	140 x 22	<a href="#">28243</a>	M 100 x 3.0	150 x 25	<a href="#">28257</a>
M 86 x 4.0	140 x 22	<a href="#">28230</a>	M 95 x 2.0	140 x 22	<a href="#">28244</a>	M 100 x 4.0	150 x 25	<a href="#">28258</a>
M 88 x 1.5	140 x 22	<a href="#">28231</a>	M 95 x 3.0	140 x 22	<a href="#">28245</a>	M 105 x 1.5	150 x 25	<a href="#">28259</a>
M 88 x 2.0	140 x 22	<a href="#">28232</a>	M 95 x 4.0	140 x 22	<a href="#">28246</a>	M 105 x 2.0	150 x 25	<a href="#">28260</a>
M 88 x 3.0	140 x 22	<a href="#">28233</a>	M 96 x 1.5	140 x 22	<a href="#">28247</a>	M 105 x 3.0	150 x 25	<a href="#">28261</a>
M 88 x 4.0	140 x 22	<a href="#">28234</a>	M 96 x 2.0	140 x 22	<a href="#">28248</a>	M 105 x 4.0	150 x 25	<a href="#">28262</a>
M 90 x 1.5	140 x 22	<a href="#">28235</a>	M 96 x 3.0	140 x 22	<a href="#">28249</a>	M 110 x 1.5	160 x 25	<a href="#">28263</a>
M 90 x 2.0	140 x 22	<a href="#">28236</a>	M 96 x 4.0	140 x 22	<a href="#">28250</a>	M 110 x 2.0	160 x 25	<a href="#">28264</a>
M 90 x 3.0	140 x 22	<a href="#">28237</a>	M 98 x 1.5	150 x 25	<a href="#">28251</a>	M 110 x 3.0	160 x 25	<a href="#">28265</a>
M 90 x 4.0	140 x 22	<a href="#">28238</a>	M 98 x 2.0	150 x 25	<a href="#">28252</a>	M 110 x 4.0	160 x 25	<a href="#">28266</a>



## Round dies gun nosed

DIN 223 (DIN EN 22568) HSS-E - Mf

Type of thread: metric ISO-thread DIN 13

Tolerance: 6g

Variants (17):

### Advantages:

- > high cutting ability
- > easy cut
- > uninterrupted swarf flow in direction of feed
- > prevents jamming of swarf

### Application:

- > abrasive material up to 1200 N/mm<sup>2</sup>
- > stainless steel
- > and for general use

D - mm	Ø - o / d	Art.-No.
M 6 x 0.75	20 x 7	<a href="#">56418</a>
M 8 x 0.75	25 x 9	<a href="#">56424</a>
M 8 x 1.0	25 x 9	<a href="#">56426</a>
M 10 x 1.0	30 x 11	<a href="#">56436</a>
M 10 x 1.25	30 x 11	<a href="#">56438</a>
M 12 x 1.0	38 x 10	<a href="#">56444</a>
M 12 x 1.25	38 x 10	<a href="#">56446</a>
M 12 x 1.5	38 x 10	<a href="#">56448</a>
M 14 x 1.25	38 x 10	<a href="#">56454</a>

D - mm	Ø - o / d	Art.-No.
M 14 x 1.5	38 x 10	<a href="#">56456</a>
M 16 x 1.5	45 x 14	<a href="#">56466</a>
M 18 x 1.5	45 x 14	<a href="#">56472</a>
M 18 x 2.0	45 x 14	<a href="#">56474</a>
M 20 x 1.5	45 x 14	<a href="#">56484</a>
M 20 x 2.0	45 x 14	<a href="#">56486</a>
M 22 x 1.5	55 x 16	<a href="#">56494</a>
M 24 x 1.5	55 x 16	<a href="#">56604</a>





## Round dies, left hand

DIN 223 (DIN EN 22568) HSS - Mf LH

Type of thread: metric ISO-thread DIN 13

Tolerance: 6g

Variants (134):

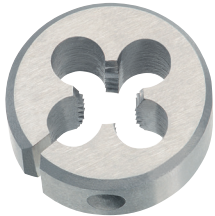
**Application:** > non abrasive material up to 800 N/mm<sup>2</sup> > unalloyed and low alloyed steel

D - mm	Ø - o / d	Art.-No.	D - mm	Ø - o / d	Art.-No.	D - mm	Ø - o / d	Art.-No.
M 2.5 x 0.35	16 x 5	<a href="#">26801</a>	M 14 x 1.0	38 x 10	<a href="#">26829</a>	M 26 x 1.0	55 x 16	<a href="#">26856</a>
M 3 x 0.35	20 x 5	<a href="#">26802</a>	M 14 x 1.25	38 x 10	<a href="#">26227</a>	M 26 x 1.5	55 x 16	<a href="#">26857</a>
M 3.5 x 0.35	20 x 5	<a href="#">26803</a>	M 14 x 1.5	38 x 10	<a href="#">26228</a>	M 26 x 2.0	55 x 16	<a href="#">26858</a>
M 4 x 0.35	20 x 5	<a href="#">26804</a>	M 15 x 0.75	38 x 10	<a href="#">26830</a>	M 27 x 1.0	65 x 18	<a href="#">26859</a>
M 4 x 0.5	20 x 5	<a href="#">26805</a>	M 15 x 1.0	38 x 10	<a href="#">26831</a>	M 27 x 1.5	65 x 18	<a href="#">26860</a>
M 4.5 x 0.5	20 x 5	<a href="#">26806</a>	M 15 x 1.5	38 x 10	<a href="#">26832</a>	M 27 x 2.0	65 x 18	<a href="#">26861</a>
M 5 x 0.5	20 x 5	<a href="#">26807</a>	M 16 x 0.75	45 x 14	<a href="#">26833</a>	M 28 x 1.0	65 x 18	<a href="#">26862</a>
M 5 x 0.75	20 x 7	<a href="#">26808</a>	M 16 x 1.0	45 x 14	<a href="#">26231</a>	M 28 x 1.5	65 x 18	<a href="#">26863</a>
M 5.5 x 0.5	20 x 5	<a href="#">26809</a>	M 16 x 1.25	45 x 14	<a href="#">26834</a>	M 28 x 2.0	65 x 18	<a href="#">26864</a>
M 6 x 0.5	20 x 5	<a href="#">26810</a>	M 16 x 1.5	45 x 14	<a href="#">26233</a>	M 29 x 1.5	65 x 18	<a href="#">26865</a>
M 6 x 0.75	20 x 7	<a href="#">26207</a>	M 17 x 1.0	45 x 14	<a href="#">26835</a>	M 30 x 1.0	65 x 18	<a href="#">26866</a>
M 7 x 0.5	25 x 9	<a href="#">26811</a>	M 17 x 1.5	45 x 14	<a href="#">26836</a>	M 30 x 1.5	65 x 18	<a href="#">26867</a>
M 7 x 0.75	25 x 9	<a href="#">26812</a>	M 18 x 0.75	45 x 14	<a href="#">26837</a>	M 30 x 2.0	65 x 18	<a href="#">26264</a>
M 8 x 0.5	25 x 9	<a href="#">26813</a>	M 18 x 1.0	45 x 14	<a href="#">26838</a>	M 30 x 2.5	65 x 18	<a href="#">26265</a>
M 8 x 0.75	25 x 9	<a href="#">26210</a>	M 18 x 1.25	45 x 14	<a href="#">26839</a>	M 30 x 3.0	65 x 25	<a href="#">26266</a>
M 8 x 1.0	25 x 9	<a href="#">26211</a>	M 18 x 1.5	45 x 14	<a href="#">26236</a>	M 32 x 1.0	65 x 18	<a href="#">26267</a>
M 9 x 0.5	25 x 9	<a href="#">26814</a>	M 18 x 2.0	45 x 14	<a href="#">26840</a>	M 32 x 1.5	65 x 18	<a href="#">26268</a>
M 9 x 0.75	25 x 9	<a href="#">26815</a>	M 19 x 1.0	45 x 14	<a href="#">26841</a>	M 32 x 2.0	65 x 18	<a href="#">26269</a>
M 9 x 1.0	25 x 9	<a href="#">26816</a>	M 19 x 1.5	45 x 14	<a href="#">26842</a>	M 32 x 3.0	65 x 25	<a href="#">26270</a>
M 10 x 0.5	30 x 11	<a href="#">26817</a>	M 20 x 0.5	45 x 14	<a href="#">26843</a>	M 33 x 1.5	65 x 18	<a href="#">26271</a>
M 10 x 0.75	30 x 11	<a href="#">26818</a>	M 20 x 0.75	45 x 14	<a href="#">26844</a>	M 33 x 2.0	65 x 18	<a href="#">26272</a>
M 10 x 1.0	30 x 11	<a href="#">26215</a>	M 20 x 1.0	45 x 14	<a href="#">26845</a>	M 33 x 3.0	65 x 25	<a href="#">26273</a>
M 10 x 1.25	30 x 11	<a href="#">26216</a>	M 20 x 1.25	45 x 14	<a href="#">26846</a>	M 34 x 1.0	65 x 18	<a href="#">26274</a>
M 11 x 1.0	30 x 11	<a href="#">26819</a>	M 20 x 1.5	45 x 14	<a href="#">26240</a>	M 34 x 1.5	65 x 18	<a href="#">26275</a>
M 11 x 1.25	30 x 11	<a href="#">26820</a>	M 20 x 2.0	45 x 14	<a href="#">26847</a>	M 34 x 2.0	65 x 18	<a href="#">26276</a>
M 12 x 0.5	38 x 10	<a href="#">26821</a>	M 21 x 1.0	45 x 14	<a href="#">26848</a>	M 35 x 1.0	65 x 18	<a href="#">26277</a>
M 12 x 0.75	38 x 10	<a href="#">26822</a>	M 21 x 1.5	45 x 14	<a href="#">26849</a>	M 35 x 1.5	65 x 18	<a href="#">26278</a>
M 12 x 1.0	38 x 10	<a href="#">26220</a>	M 22 x 1.0	55 x 16	<a href="#">26850</a>	M 35 x 2.0	65 x 18	<a href="#">26279</a>
M 12 x 1.25	38 x 10	<a href="#">26221</a>	M 22 x 1.25	55 x 16	<a href="#">26851</a>	M 36 x 1.0	65 x 18	<a href="#">26280</a>
M 12 x 1.5	38 x 10	<a href="#">26222</a>	M 22 x 1.5	55 x 16	<a href="#">26245</a>	M 36 x 1.5	65 x 18	<a href="#">26281</a>
M 13 x 0.5	38 x 10	<a href="#">26823</a>	M 22 x 2.0	55 x 16	<a href="#">26852</a>	M 36 x 2.0	65 x 18	<a href="#">26282</a>
M 13 x 0.75	38 x 10	<a href="#">26824</a>	M 24 x 1.25	55 x 16	<a href="#">26853</a>	M 36 x 3.0	65 x 25	<a href="#">26283</a>
M 13 x 1.0	38 x 10	<a href="#">26825</a>	M 24 x 1.5	55 x 16	<a href="#">26250</a>	M 37 x 1.5	65 x 18	<a href="#">26284</a>
M 13 x 1.5	38 x 10	<a href="#">26826</a>	M 24 x 2.0	55 x 16	<a href="#">26251</a>	M 38 x 1.0	75 x 20	<a href="#">26285</a>
M 14 x 0.5	38 x 10	<a href="#">26827</a>	M 25 x 1.0	55 x 16	<a href="#">26854</a>	M 38 x 1.5	75 x 20	<a href="#">26286</a>
M 14 x 0.75	38 x 10	<a href="#">26828</a>	M 25 x 1.5	55 x 16	<a href="#">26855</a>	M 38 x 2.0	75 x 20	<a href="#">26287</a>

D = Nominal Diameter    Ø - o / d = Outer Diameter



D - mm	Ø - o / d	Art.-No.	D - mm	Ø - o / d	Art.-No.	D - mm	Ø - o / d	Art.-No.
M 38 x 3.0	75 x 30	<a href="#">26288</a>	M 42 x 1.5	75 x 20	<a href="#">26297</a>	M 48 x 2.0	90 x 22	<a href="#">26874</a>
M 39 x 1.5	75 x 20	<a href="#">26289</a>	M 42 x 2.0	75 x 20	<a href="#">26298</a>	M 48 x 3.0	90 x 36	<a href="#">26875</a>
M 39 x 2.0	75 x 20	<a href="#">26290</a>	M 42 x 3.0	75 x 30	<a href="#">26299</a>	M 50 x 1.5	90 x 22	<a href="#">26876</a>
M 39 x 3.0	75 x 30	<a href="#">26291</a>	M 44 x 1.5	90 x 22	<a href="#">26868</a>	M 50 x 2.0	90 x 22	<a href="#">26877</a>
M 40 x 1.0	75 x 20	<a href="#">26292</a>	M 45 x 1.5	90 x 22	<a href="#">26869</a>	M 50 x 3.0	90 x 36	<a href="#">26878</a>
M 40 x 1.5	75 x 20	<a href="#">26293</a>	M 45 x 2.0	90 x 22	<a href="#">26870</a>	M 52 x 1.5	90 x 22	<a href="#">26879</a>
M 40 x 2.0	75 x 20	<a href="#">26294</a>	M 45 x 3.0	90 x 36	<a href="#">26871</a>	M 52 x 2.0	90 x 22	<a href="#">26880</a>
M 40 x 3.0	75 x 30	<a href="#">26295</a>	M 46 x 1.5	90 x 22	<a href="#">26872</a>	M 52 x 3.0	90 x 36	<a href="#">26881</a>
M 42 x 1.0	75 x 20	<a href="#">26296</a>	M 48 x 1.5	90 x 22	<a href="#">26873</a>			



## Round dies

BS 1127; 1950 HSS - Mf

Type of thread: metric ISO-thread DIN 13

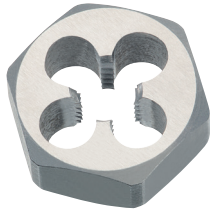
Tolerance: 6g

Variants (46):

**Application:** > non abrasive material up to 800 N/mm<sup>2</sup> > unalloyed and low alloyed steel

D - mm	Ø - o / d	L1	Art.-No.	D - mm	Ø - o / d	L1	Art.-No.
M 3 x 0.35	13/16 o / d	1/4 width	<a href="#">81010</a>	M 16 x 1.5	1.1/2 o / d	1/2 width	<a href="#">81044</a>
M 4 x 0.5	13/16 o / d	1/4 width	<a href="#">81011</a>	M 18 x 1.0	1.1/2 o / d	1/2 width	<a href="#">81045</a>
M 4 x 0.75	13/16 o / d	1/4 width	<a href="#">81012</a>	M 18 x 1.25	1.1/2 o / d	1/2 width	<a href="#">81046</a>
M 5 x 0.5	13/16 o / d	1/4 width	<a href="#">81013</a>	M 18 x 1.5	1.1/2 o / d	1/2 width	<a href="#">81047</a>
M 5 x 0.9	13/16 o / d	1/4 width	<a href="#">81014</a>	M 18 x 2.0	1.1/2 o / d	1/2 width	<a href="#">81048</a>
M 6 x 0.75	13/16 o / d	1/4 width	<a href="#">81015</a>	M 20 x 1.0	1.1/2 o / d	1/2 width	<a href="#">81049</a>
M 6 x 0.75	1" o / d	3/8 width	<a href="#">81020</a>	M 20 x 1.25	1.1/2 o / d	1/2 width	<a href="#">81050</a>
M 8 x 0.75	1" o / d	3/8 width	<a href="#">81021</a>	M 20 x 1.5	1.1/2 o / d	1/2 width	<a href="#">81051</a>
M 8 x 1.0	1" o / d	3/8 width	<a href="#">81022</a>	M 20 x 2.0	1.1/2 o / d	1/2 width	<a href="#">81052</a>
M 9 x 1.0	1" o / d	3/8 width	<a href="#">81023</a>	M 18 x 1.5	5/8 o / d	5/8 width	<a href="#">81060</a>
M 10 x 0.75	1" o / d	3/8 width	<a href="#">81024</a>	M 20 x 1.0	5/8 o / d	5/8 width	<a href="#">81061</a>
M 10 x 1.0	1" o / d	3/8 width	<a href="#">81025</a>	M 20 x 1.5	5/8 o / d	5/8 width	<a href="#">81062</a>
M 10 x 1.25	1" o / d	3/8 width	<a href="#">81026</a>	M 22 x 1.5	5/8 o / d	5/8 width	<a href="#">81063</a>
M 12 x 1.0	1.5/16 o / d	7/16 width	<a href="#">81030</a>	M 24 x 1.5	5/8 o / d	5/8 width	<a href="#">81064</a>
M 12 x 1.25	1.5/16 o / d	7/16 width	<a href="#">81031</a>	M 24 x 2.0	5/8 o / d	5/8 width	<a href="#">81065</a>
M 12 x 1.5	1.5/16 o / d	7/16 width	<a href="#">81032</a>	M 25 x 1.5	5/8 o / d	5/8 width	<a href="#">81066</a>
M 14 x 1.25	1.5/16 o / d	7/16 width	<a href="#">81033</a>	M 26 x 1.5	5/8 o / d	5/8 width	<a href="#">81067</a>
M 14 x 1.5	1.5/16 o / d	7/16 width	<a href="#">81034</a>	M 27 x 2.0	3/4 o / d	3/4 width	<a href="#">81080</a>
M 16 x 1.5	1.5/16 o / d	7/16 width	<a href="#">81035</a>	M 30 x 2.0	3/4 o / d	3/4 width	<a href="#">81081</a>
M 14 x 1.0	1.1/2 o / d	1/2 width	<a href="#">81040</a>	M 27 x 1.5	7/8 o / d	7/8 width	<a href="#">81090</a>
M 14 x 1.25	1.1/2 o / d	1/2 width	<a href="#">81041</a>	M 30 x 1.5	7/8 o / d	7/8 width	<a href="#">81091</a>
M 14 x 1.5	1.1/2 o / d	1/2 width	<a href="#">81042</a>	M 36 x 2.0	7/8 o / d	7/8 width	<a href="#">81092</a>
M 16 x 1.0	1.1/2 o / d	1/2 width	<a href="#">81043</a>	M 36 x 3.0	7/8 o / d	7/8 width	<a href="#">81093</a>

D = Nominal Diameter    o / d = Outer Diameter    L1 = Overall Length



## Hexagon die nuts

DIN 382 HSS - Mf

Type of thread: metric ISO-thread DIN 13

Tolerance: 6g

Variants (101):

**Application:** For cleaning and repairing damaged threads and for general use in awkward places.

D - mm	Width across flats	Art.-No.	D - mm	Width across flats	Art.-No.	D - mm	Width across flats	Art.-No.
M 3 x 0.35	19 x 5	<a href="#">26108</a>	M 18 x 1.25	41 x 14	<a href="#">26171</a>	M 32 x 2.0	60 x 18	<a href="#">26735</a>
M 4 x 0.35	19 x 5	<a href="#">26110</a>	M 18 x 1.5	41 x 14	<a href="#">26172</a>	M 32 x 3.0	60 x 25	<a href="#">26737</a>
M 4 x 0.5	19 x 5	<a href="#">26112</a>	M 18 x 2.0	41 x 14	<a href="#">26174</a>	M 33 x 1.5	60 x 18	<a href="#">26738</a>
M 5 x 0.5	19 x 5	<a href="#">26114</a>	M 20 x 1.0	41 x 14	<a href="#">26178</a>	M 33 x 2.0	60 x 18	<a href="#">26740</a>
M 5 x 0.75	19 x 7	<a href="#">26116</a>	M 20 x 1.25	41 x 14	<a href="#">26180</a>	M 33 x 3.0	60 x 25	<a href="#">26742</a>
M 6 x 0.5	19 x 5	<a href="#">26117</a>	M 20 x 1.5	41 x 14	<a href="#">26184</a>	M 34 x 1.5	60 x 18	<a href="#">26744</a>
M 6 x 0.75	19 x 7	<a href="#">26118</a>	M 20 x 2.0	41 x 14	<a href="#">26186</a>	M 34 x 2.0	60 x 18	<a href="#">26746</a>
M 7 x 0.75	22 x 9	<a href="#">26120</a>	M 21 x 1.5	41 x 14	<a href="#">26188</a>	M 35 x 1.5	60 x 18	<a href="#">26748</a>
M 8 x 0.5	22 x 9	<a href="#">26122</a>	M 22 x 1.0	50 x 16	<a href="#">26190</a>	M 36 x 1.5	60 x 18	<a href="#">26750</a>
M 8 x 0.75	22 x 9	<a href="#">26124</a>	M 22 x 1.25	50 x 16	<a href="#">26192</a>	M 36 x 2.0	60 x 18	<a href="#">26752</a>
M 8 x 1.0	22 x 9	<a href="#">26126</a>	M 22 x 1.5	50 x 16	<a href="#">26194</a>	M 36 x 3.0	60 x 25	<a href="#">26754</a>
M 9 x 0.75	22 x 9	<a href="#">26128</a>	M 22 x 2.0	50 x 16	<a href="#">26196</a>	M 38 x 1.5	70 x 20	<a href="#">26756</a>
M 9 x 1.0	22 x 9	<a href="#">26130</a>	M 23 x 1.5	50 x 16	<a href="#">26198</a>	M 39 x 1.5	70 x 20	<a href="#">26758</a>
M 10 x 0.75	27 x 11	<a href="#">26132</a>	M 24 x 1.0	50 x 16	<a href="#">26700</a>	M 39 x 2.0	70 x 20	<a href="#">26760</a>
M 10 x 1.0	27 x 11	<a href="#">26136</a>	M 24 x 1.25	50 x 16	<a href="#">26702</a>	M 39 x 3.0	70 x 30	<a href="#">26762</a>
M 10 x 1.25	27 x 11	<a href="#">26138</a>	M 24 x 1.5	50 x 16	<a href="#">26704</a>	M 40 x 1.5	70 x 20	<a href="#">26764</a>
M 11 x 1.0	27 x 11	<a href="#">26140</a>	M 24 x 2.0	50 x 16	<a href="#">26706</a>	M 40 x 2.0	70 x 20	<a href="#">26766</a>
M 11 x 1.25	27 x 11	<a href="#">26142</a>	M 25 x 1.0	50 x 16	<a href="#">26707</a>	M 40 x 3.0	70 x 30	<a href="#">26768</a>
M 12 x 0.75	36 x 10	<a href="#">26143</a>	M 25 x 1.5	50 x 16	<a href="#">26708</a>	M 42 x 1.5	70 x 20	<a href="#">26770</a>
M 12 x 1.0	36 x 10	<a href="#">26144</a>	M 26 x 1.0	50 x 16	<a href="#">26710</a>	M 42 x 2.0	70 x 20	<a href="#">26772</a>
M 12 x 1.25	36 x 10	<a href="#">26146</a>	M 26 x 1.5	50 x 16	<a href="#">26712</a>	M 42 x 3.0	70 x 30	<a href="#">26774</a>
M 12 x 1.5	36 x 10	<a href="#">26148</a>	M 26 x 2.0	50 x 16	<a href="#">26714</a>	M 45 x 1.5	85 x 22	<a href="#">26776</a>
M 13 x 1.0	36 x 10	<a href="#">26150</a>	M 27 x 1.0	60 x 18	<a href="#">26717</a>	M 45 x 2.0	85 x 22	<a href="#">26778</a>
M 13 x 1.5	36 x 10	<a href="#">26151</a>	M 27 x 1.5	60 x 18	<a href="#">26716</a>	M 45 x 3.0	85 x 36	<a href="#">26780</a>
M 14 x 0.75	36 x 10	<a href="#">26152</a>	M 27 x 2.0	60 x 18	<a href="#">26718</a>	M 48 x 1.5	85 x 22	<a href="#">26782</a>
M 14 x 1.0	36 x 10	<a href="#">26153</a>	M 28 x 1.0	60 x 18	<a href="#">26720</a>	M 48 x 2.0	85 x 22	<a href="#">26784</a>
M 14 x 1.25	36 x 10	<a href="#">26154</a>	M 28 x 1.5	60 x 18	<a href="#">26722</a>	M 48 x 3.0	85 x 36	<a href="#">26786</a>
M 14 x 1.5	36 x 10	<a href="#">26156</a>	M 28 x 2.0	60 x 18	<a href="#">26724</a>	M 50 x 1.5	85 x 22	<a href="#">26788</a>
M 15 x 1.0	36 x 10	<a href="#">26158</a>	M 29 x 1.5	60 x 18	<a href="#">26726</a>	M 50 x 2.0	85 x 22	<a href="#">26790</a>
M 15 x 1.5	36 x 10	<a href="#">26160</a>	M 30 x 1.0	60 x 18	<a href="#">26728</a>	M 50 x 3.0	85 x 36	<a href="#">26792</a>
M 16 x 1.0	41 x 14	<a href="#">26162</a>	M 30 x 1.5	60 x 18	<a href="#">26730</a>	M 52 x 1.5	85 x 22	<a href="#">26794</a>
M 16 x 1.25	41 x 14	<a href="#">26164</a>	M 30 x 2.0	60 x 18	<a href="#">26732</a>	M 52 x 2.0	85 x 22	<a href="#">26796</a>
M 16 x 1.5	41 x 14	<a href="#">26166</a>	M 30 x 3.0	60 x 25	<a href="#">26734</a>	M 52 x 3.0	85 x 36	<a href="#">26798</a>
M 18 x 1.0	41 x 14	<a href="#">26170</a>	M 32 x 1.5	60 x 18	<a href="#">26736</a>			



## BSW



### Round dies

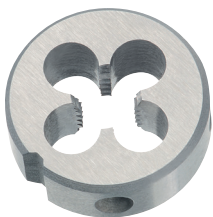
DIN 223 (DIN EN 22568) HSS-G - BSW

Type of thread: Whitworth-thread BS 84

Variants (29):

**Application:** > non abrasive material up to 800 N/mm<sup>2</sup> > unalloyed and low alloyed steel

D - mm	Ø - o / d	Art.-No.	D - mm	Ø - o / d	Art.-No.
BSW 1/16 x 60	16 x 5	<a href="#">22402</a>	BSW 1" x 8	55 x 22	<a href="#">22438</a>
BSW 3/32 x 48	16 x 5	<a href="#">22404</a>	BSW 1.1/8 x 7	65 x 25	<a href="#">22442</a>
BSW 1/8 x 40	20 x 5	<a href="#">22406</a>	BSW 1.1/4 x 7	65 x 25	<a href="#">22446</a>
BSW 5/32 x 32	20 x 5	<a href="#">22408</a>	BSW 1.3/8 x 6	65 x 25	<a href="#">22450</a>
BSW 3/16 x 24	20 x 7	<a href="#">22410</a>	BSW 1.1/2 x 6	65 x 25	<a href="#">22452</a>
BSW 7/32 x 24	20 x 7	<a href="#">22412</a>	BSW 1.1/2 x 6	75 x 30	<a href="#">22454</a>
BSW 1/4 x 20	20 x 7	<a href="#">22414</a>	BSW 1.5/8 x 5	75 x 30	<a href="#">22458</a>
BSW 5/16 x 18	25 x 9	<a href="#">22416</a>	BSW 1.3/4 x 5	90 x 36	<a href="#">22462</a>
BSW 3/8 x 16	30 x 11	<a href="#">22418</a>	BSW 1.7/8 x 4.1/2	90 x 36	<a href="#">22466</a>
BSW 7/16 x 14	30 x 11	<a href="#">22420</a>	BSW 2" x 4.1/2	90 x 36	<a href="#">22470</a>
BSW 1/2 x 12	38 x 14	<a href="#">22422</a>	BSW 2.1/4 x 4	105 x 36	<a href="#">22472</a>
BSW 9/16 x 12	38 x 14	<a href="#">22424</a>	BSW 2.1/2 x 4	105 x 36	<a href="#">22474</a>
BSW 5/8 x 11	45 x 18	<a href="#">22426</a>	BSW 2.3/4 x 3.1/2	120 x 36	<a href="#">22476</a>
BSW 3/4 x 10	45 x 18	<a href="#">22430</a>	BSW 3" x 3.1/2	120 x 36	<a href="#">22478</a>
BSW 7/8 x 9	55 x 22	<a href="#">22434</a>			



### Round dies

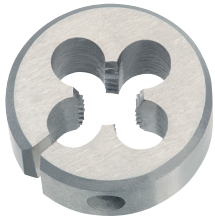
BS 1127; 1950 HSS - BSW fine

Type of thread: Whitworth-thread BS 84

Variants (5):

**Application:** > non abrasive material up to 800 N/mm<sup>2</sup> > unalloyed and low alloyed steel

D - mm	Ø - o / d	L1	Art.-No.
BSW 1/4 x 26	1" o / d	3/8 width	<a href="#">84110</a>
BSW 5/16 x 26	1" o / d	3/8 width	<a href="#">84111</a>
BSW 3/8 x 26	1" o / d	3/8 width	<a href="#">84112</a>
BSW 7/16 x 26	1.5/16 o / d	7/16 width	<a href="#">84120</a>
BSW 1/2 x 26	1.5/16 o / d	7/16 width	<a href="#">84121</a>



## Round dies

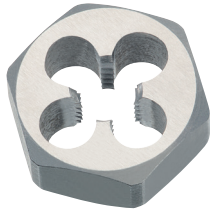
BS 1127; 1950 HSS - BSW

Type of thread: Whitworth-thread BS 84

Variants (33):

**Application:** > non abrasive material up to 800 N/mm<sup>2</sup> > unalloyed and low alloyed steel

D - mm	Ø - o / d	L1	Art.-No.
BSW 3/32 x 48	13/16 o / d	1/4 width	<a href="#">84001</a>
BSW 1/8 x 40	13/16 o / d	1/4 width	<a href="#">84002</a>
BSW 5/32 x 32	13/16 o / d	1/4 width	<a href="#">84003</a>
BSW 3/16 x 24	13/16 o / d	1/4 width	<a href="#">84004</a>
BSW 7/32 x 24	13/16 o / d	1/4 width	<a href="#">84005</a>
BSW 1/4 x 20	13/16 o / d	1/4 width	<a href="#">84006</a>
BSW 1/4 x 20	1" o / d	3/8 width	<a href="#">84010</a>
BSW 5/16 x 18	1" o / d	3/8 width	<a href="#">84011</a>
BSW 3/8 x 16	1" o / d	3/8 width	<a href="#">84012</a>
BSW 7/16 x 14	1" o / d	3/8 width	<a href="#">84013</a>
BSW 1/2 x 12	1" o / d	3/8 width	<a href="#">84014</a>
BSW 1/4 x 20	1.5/16 o / d	7/16 width	<a href="#">84020</a>
BSW 5/16 x 18	1.5/16 o / d	7/16 width	<a href="#">84021</a>
BSW 3/8 x 16	1.5/17 o / d	7/16 width	<a href="#">84022</a>
BSW 7/16 x 14	1.5/17 o / d	7/16 width	<a href="#">84023</a>
BSW 1/2 x 12	1.5/18 o / d	7/8 width	<a href="#">84024</a>
BSW 9/16 x 12	1.5/18 o / d	7/8 width	<a href="#">84025</a>
BSW 3/8 x 16	1.1/2 o / d	1/2 width	<a href="#">84030</a>
BSW 7/16 x 14	1.1/2 o / d	1/2 width	<a href="#">84031</a>
BSW 1/2 x 12	1.1/2 o / d	1/2 width	<a href="#">84032</a>
BSW 9/16 x 12	1.1/2 o / d	1/2 width	<a href="#">84033</a>
BSW 5/8 x 11	1.1/2 o / d	1/2 width	<a href="#">84034</a>
BSW 3/4 x 10	1.1/2 o / d	1/2 width	<a href="#">84035</a>
BSW 1/2 x 12	2" o / d	5/8 width	<a href="#">84040</a>
BSW 9/16 x 12	2" o / d	5/8 width	<a href="#">84041</a>
BSW 5/8 x 11	2" o / d	5/8 width	<a href="#">84042</a>
BSW 3/4 x 10	2" o / d	5/8 width	<a href="#">84043</a>
BSW 7/8 x 9	2" o / d	5/8 width	<a href="#">84044</a>
BSW 1 x 8	2" o / d	5/8 width	<a href="#">84045</a>
BSW 1.1/8 x 7	3" o / d	7/6 width	<a href="#">84050</a>
BSW 1.1/4 x 7	3" o / d	7/6 width	<a href="#">84051</a>
BSW 1.3/8 x 6	3" o / d	7/8 width	<a href="#">84052</a>
BSW 1.1/2 x 6	3" o / d	7/8 width	<a href="#">84053</a>



## Hexagon die nuts

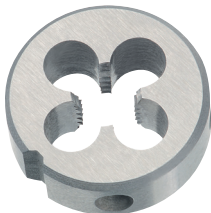
DIN 382 HSS - BSW

Type of thread: Whitworth-thread BS 84

Variants (21):

**Application:** For cleaning and repairing damaged threads and for general use in awkward places.

D - mm	Width across flats	Art.-No.	D - mm	Width across flats	Art.-No.
BSW 1/8 x 40	19 x 5	<a href="#">22106</a>	BSW 1" x 8	50 x 22	<a href="#">22138</a>
BSW 3/16 x 24	19 x 7	<a href="#">22110</a>	BSW 1.1/8 x 7	60 x 25	<a href="#">22142</a>
BSW 1/4 x 20	19 x 7	<a href="#">22114</a>	BSW 1.1/4 x 7	60 x 25	<a href="#">22146</a>
BSW 5/16 x 18	22 x 9	<a href="#">22116</a>	BSW 1.3/8 x 6	60 x 25	<a href="#">22150</a>
BSW 3/8 x 16	27 x 11	<a href="#">22118</a>	BSW 1.1/2 x 6	70 x 30	<a href="#">22154</a>
BSW 7/16 x 14	27 x 11	<a href="#">22120</a>	BSW 2" x 4.1/2	85 x 36	<a href="#">22170</a>
BSW 1/2 x 12	36 x 14	<a href="#">22122</a>	BSW 2.1/4 x 4	100 x 36	<a href="#">22172</a>
BSW 9/16 x 12	36 x 14	<a href="#">22124</a>	BSW 2.1/2 x 4	115 x 36	<a href="#">22174</a>
BSW 5/8 x 11	41 x 18	<a href="#">22126</a>	BSW 2.3/4 x 3.1/2	115 x 36	<a href="#">22176</a>
BSW 3/4 x 10	41 x 18	<a href="#">22130</a>	BSW 3" x 3.1/2	115 x 36	<a href="#">22178</a>
BSW 7/8 x 9	50 x 22	<a href="#">22134</a>			



## Round dies, left hand

DIN 223 (DIN EN 22568) HSS-G - BSW LH

Type of thread: Whitworth-thread BS 84

Variants (13):

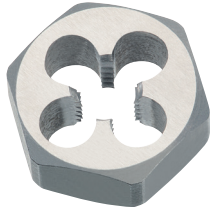
**Application:** > non abrasive material up to 800 N/mm<sup>2</sup> > unalloyed and low alloyed steel

D - mm	Ø - o / d	Art.-No.
BSW 1/8 x 40	20 x 5	<a href="#">22206</a>
BSW 5/32 x 32	20 x 5	<a href="#">22208</a>
BSW 3/16 x 24	20 x 7	<a href="#">22210</a>
BSW 1/4 x 20	20 x 7	<a href="#">22214</a>
BSW 5/16 x 18	25 x 9	<a href="#">22216</a>
BSW 3/8 x 16	30 x 11	<a href="#">22218</a>
BSW 7/16 x 14	30 x 11	<a href="#">22220</a>
BSW 1/2 x 12	38 x 14	<a href="#">22222</a>
BSW 9/16 x 12	38 x 14	<a href="#">22224</a>
BSW 5/8 x 11	45 x 18	<a href="#">22226</a>
BSW 3/4 x 10	45 x 18	<a href="#">22230</a>
BSW 7/8 x 9	55 x 22	<a href="#">22234</a>
BSW 1" x 8	55 x 22	<a href="#">22238</a>





## BSF



### Hexagon die nuts

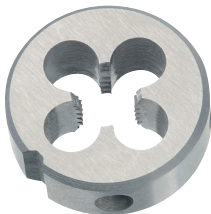
DIN 382 HSS - BSF

Type of thread: Whitworth-thread BS 84

Variants (11):

**Application:** For cleaning and repairing damaged threads and for general use in awkward places.

D - mm	Width across flats	Art.-No.	D - mm	Width across flats	Art.-No.
BSF 3/16 x 32	19 x 7	<a href="#">22510</a>	BSF 9/16 x 16	36 x 10	<a href="#">22524</a>
BSF 1/4 x 26	19 x 7	<a href="#">22514</a>	BSF 5/8 x 14	41 x 14	<a href="#">22526</a>
BSF 5/16 x 22	22 x 9	<a href="#">22516</a>	BSF 3/4 x 12	41 x 14	<a href="#">22530</a>
BSF 3/8 x 20	27 x 11	<a href="#">22518</a>	BSF 7/8 x 11	50 x 16	<a href="#">22534</a>
BSF 7/16 x 18	27 x 11	<a href="#">22520</a>	BSF 1" x 10	50 x 16	<a href="#">22538</a>
BSF 1/2 x 16	36 x 10	<a href="#">22522</a>			



### Round dies

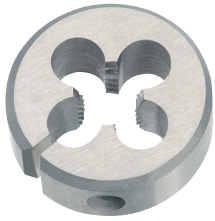
DIN 223 (DIN EN 22568) HSS-G - BSF

Type of thread: British-Standard-Fine-thread BS 84

Variants (11):

**Application:** > non abrasive material up to 800 N/mm<sup>2</sup> > unalloyed and low alloyed steel

D - mm	Ø - o / d	Art.-No.
BSF 3/16 x 32	20 x 7	<a href="#">22810</a>
BSF 1/4 x 26	20 x 7	<a href="#">22814</a>
BSF 5/16 x 22	25 x 9	<a href="#">22816</a>
BSF 3/8 x 20	30 x 11	<a href="#">22818</a>
BSF 7/16 x 18	30 x 11	<a href="#">22820</a>
BSF 1/2 x 16	38 x 10	<a href="#">22822</a>
BSF 9/16 x 16	38 x 10	<a href="#">22824</a>
BSF 5/8 x 14	45 x 14	<a href="#">22826</a>
BSF 3/4 x 12	45 x 14	<a href="#">22830</a>
BSF 7/8 x 11	55 x 16	<a href="#">22834</a>
BSF 1" x 10	55 x 22	<a href="#">22838</a>



## Round dies

BS 1127; 1950 HSS - BSF

Type of thread: British-Standard-Fine-thread BS 84

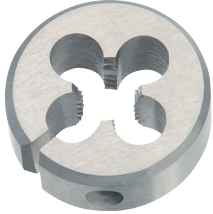
Variants (26):

**Application:** > non abrasive material up to 800 N/mm<sup>2</sup> > unalloyed and low alloyed steel

D - mm	Ø - o / d	L1	Art.-No.
BSF 3/16 x 32	13/16 o / d	1/4 width	<a href="#">85004</a>
BSF 7/32 x 30	13/16 o / d	1/4 width	<a href="#">85005</a>
BSF 1/4 x 26	13/16 o / d	1/4 width	<a href="#">85006</a>
BSF 1/4 x 26	1" o / d	3/8 width	<a href="#">85010</a>
BSF 5/16 x 22	1" o / d	3/8 width	<a href="#">85011</a>
BSF 3/8 x 20	1" o / d	3/8 width	<a href="#">85012</a>
BSF 7/16 x 18	1" o / d	3/8 width	<a href="#">85013</a>
BSF 1/2 x 16	1" o / d	3/8 width	<a href="#">85014</a>
BSF 1/4 x 26	1.5/16 o / d	7/16 width	<a href="#">85020</a>
BSF 5/16 x 22	1.5/16 o / d	7/16 width	<a href="#">85021</a>
BSF 3/8 x 20	1.5/16 o / d	7/16 width	<a href="#">85022</a>
BSF 7/16 x 18	1.5/16 o / d	7/16 width	<a href="#">85023</a>
BSF 1/2 x 16	1.5/16 o / d	7/16 width	<a href="#">85024</a>
BSF 9/16 x 16	1.5/16 o / d	7/16 width	<a href="#">85025</a>
BSF 3/8 x 20	1.1/2 o / d	1/2 width	<a href="#">85030</a>
BSF 7/16 x 18	1.1/2 o / d	1/2 width	<a href="#">85031</a>
BSF 1/2 x 16	1.1/2 o / d	1/2 width	<a href="#">85032</a>
BSF 9/16 x 16	1.1/2 o / d	1/2 width	<a href="#">85033</a>
BSF 5/8 x 14	1.1/2 o / d	1/2 width	<a href="#">85034</a>
BSF 3/4 x 12	1.1/2 o / d	1/2 width	<a href="#">85035</a>
BSF 1/2 x 16	2" o / d	1/2 width	<a href="#">85040</a>
BSF 9/16 x 16	2" o / d	5/8 width	<a href="#">85041</a>
BSF 5/8 x 14	2" o / d	5/8 width	<a href="#">85042</a>
BSF 3/4 x 12	2" o / d	5/8 width	<a href="#">85043</a>
BSF 7/8 x 11	2" o / d	5/8 width	<a href="#">85044</a>
BSF 1 x 10	2" o / d	5/8 width	<a href="#">85045</a>



BA



**Round dies, split**

Form A BS 1127 HSS-G - BA

Type of thread: BA-thread BS 93

Variants (7):

**Application:** > non abrasive material up to 800 N/mm<sup>2</sup> > unalloyed and low alloyed steel

D - mm	Ø - o / d	Art.-No.
BA 0	20.6 x 6.35	<a href="#">89000</a>
BA 1	20.6 x 6.35	<a href="#">89001</a>
BA 2	20.6 x 6.35	89002
BA 3	20.6 x 6.35	89003
BA 4	20.6 x 6.35	89004
BA 5	20.6 x 6.35	89005
BA 6	20.6 x 6.35	89006



## UNC



### Hexagon die nuts (set of 5 pcs.) (49530)

DIN standard HSS UNC 1/4 - UNC 1/2

Type of thread	Standard	Material	Packing	Size
Unified Coarse thread ANSI B 1.1	DIN standard	HSS-G	in metal case	Diameter UNC 1/4 - 1/2

#### Application/ for general use:

- › non abrasive material up to 800 N/mm<sup>2</sup>
- › unalloyed and low alloyed steel
- › small, handy set for standard application
- › the most popular diameter together in one case
- › Hexagon die nuts acc. to DIN 382

All threading tools, threading tool holder and accessories can also be ordered separately

#### Contents:

#### Art. -No.

1x HSS Hexagon die nut UNC 1/4	<a href="#">23114</a>
1x HSS Hexagon die nut UNC 5/16	<a href="#">23116</a>
1x HSS Hexagon die nut UNC 3/8	<a href="#">23118</a>
1x HSS Hexagon die nut UNC 7/16	<a href="#">23120</a>
1x HSS Hexagon die nut UNC 1/2	<a href="#">23122</a>



### Hexagon die nuts

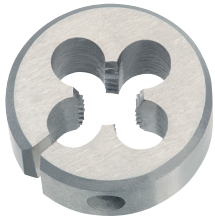
DIN 382 HSS - UNC

Type of thread: Unified Coarse thread ANSI B 1.1

Variants (14):

**Application:** For cleaning and repairing damaged threads and for general use in awkward places.

D - mm		Width across flats	Art.-No.	D - mm		Width across flats	Art.-No.
UNC 1/4 x 20		19 x 7	<a href="#">23114</a>	UNC 3/4 x 10		41 x 18	<a href="#">23130</a>
UNC 5/16 x 18		22 x 9	<a href="#">23116</a>	UNC 7/8 x 9		50 x 22	<a href="#">23134</a>
UNC 3/8 x 16		27 x 11	<a href="#">23118</a>	UNC 1" x 8		50 x 22	<a href="#">23138</a>
UNC 7/16 x 14		27 x 11	<a href="#">23120</a>	UNC 1.1/8 x 7		60 x 25	<a href="#">23142</a>
UNC 1/2 x 13		36 x 14	<a href="#">23122</a>	UNC 1.1/4 x 7		60 x 25	<a href="#">23146</a>
UNC 9/16 x 12		36 x 14	<a href="#">23124</a>	UNC 1.3/8 x 6		60 x 25	<a href="#">23150</a>
UNC 5/8 x 11		41 x 18	<a href="#">23126</a>	UNC 1.1/2 x 6		70 x 30	<a href="#">23154</a>



## Round dies

BS 1127; 1950 HSS - UNC

Type of thread: Unified Coarse thread ANSI B 1.1

Variants (33):

**Application:** > non abrasive material up to 800 N/mm<sup>2</sup> > unalloyed and low alloyed steel

D - mm	Ø - o / d	L1	Art.-No.
UNC 4 x 40	13/16 o / d	1/4 width	<a href="#">82004</a>
UNC 5 x 40	13/16 o / d	1/4 width	<a href="#">82005</a>
UNC 6 x 32	13/16 o / d	1/4 width	<a href="#">82006</a>
UNC 8 x 32	13/16 o / d	1/4 width	<a href="#">82008</a>
UNC 10 x 24	13/16 o / d	1/4 width	<a href="#">82010</a>
UNC 12 x 24	13/16 o / d	1/4 width	<a href="#">82012</a>
UNC 1/4 x 20	13/16 o / d	1/4 width	<a href="#">82013</a>
UNC 1/4 x 20	1" o / d	3/8 width	<a href="#">82020</a>
UNC 5/16 x 18	1" o / d	3/8 width	<a href="#">82021</a>
UNC 3/8 x 16	1" o / d	3/8 width	<a href="#">82022</a>
UNC 7/16 x 14	1" o / d	3/8 width	<a href="#">82023</a>
UNC 1/2 x 13	1" o / d	3/8 width	<a href="#">82024</a>
UNC 1/4 x 20	1.5/16 o / d	7/16 width	<a href="#">82030</a>
UNC 5/16 x 18	1.5/16 o / d	7/16 width	<a href="#">82031</a>
UNC 3/8 x 16	1.5/16 o / d	7/16 width	<a href="#">82032</a>
UNC 7/16 x 14	1.5/16 o / d	7/16 width	<a href="#">82033</a>
UNC 1/2 x 13	1.5/16 o / d	7/16 width	<a href="#">82034</a>
UNC 9/16 x 12	1.5/16 o / d	7/16 width	<a href="#">82035</a>
UNC 3/8 x 16	1.1/2 o / d	1/2 width	<a href="#">82040</a>
UNC 7/16 x 14	1.1/2 o / d	1/2 width	<a href="#">82041</a>
UNC 1/2 x 13	1.1/2 o / d	1/2 width	<a href="#">82042</a>
UNC 9/16 x 12	1.1/2 o / d	1/2 width	<a href="#">82043</a>
UNC 5/8 x 11	1.1/2 o / d	1/2 width	<a href="#">82044</a>
UNC 3/4 x 10	1.1/2 o / d	1/2 width	<a href="#">82045</a>
UNC 1/2 x 13	2" o / d	5/8 width	<a href="#">82050</a>
UNC 9/16 x 12	2" o / d	5/8 width	<a href="#">82051</a>
UNC 5/8 x 11	2" o / d	5/8 width	<a href="#">82052</a>
UNC 3/4 x 10	2" o / d	5/8 width	<a href="#">82053</a>
UNC 7/8 x 9	2" o / d	5/8 width	<a href="#">82054</a>
UNC 1 x 8	2" o / d	5/8 width	<a href="#">82055</a>
UNC 1.1/4 x 7	3" o / d	7/8 width	<a href="#">82056</a>
UNC 1.3/8 x 6	3" o / d	7/8 width	<a href="#">82057</a>
UNC 1.1/2 x 6	3" o / d	7/8 width	<a href="#">82058</a>



## Round dies, left hand

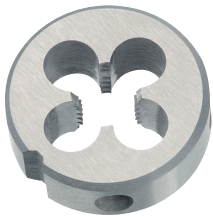
DIN 223 (DIN EN 22568) HSS-G - UNC LH

Type of thread: Unified Coarse thread ANSI B 1.1

Variants (13):

**Application:** > non abrasive material up to 800 N/mm<sup>2</sup> > unalloyed and low alloyed steel

D - mm	Ø - o / d	Art.-No.	D - mm	Ø - o / d	Art.-No.
UNC Nr. 6 x 32	20 x 7	<a href="#">23206</a>	UNC 1/2 x 13	38 x 14	<a href="#">23222</a>
UNC Nr. 8 x 32	20 x 7	<a href="#">23208</a>	UNC 9/16 x 12	38 x 14	<a href="#">23224</a>
UNC Nr.10 x 24	20 x 7	<a href="#">23210</a>	UNC 5/8 x 11	45 x 18	<a href="#">23226</a>
UNC 1/4 x 20	20 x 7	<a href="#">23214</a>	UNC 3/4 x 10	45 x 18	<a href="#">23230</a>
UNC 5/16 x 18	25 x 9	<a href="#">23216</a>	UNC 7/8 x 9	55 x 22	<a href="#">23234</a>
UNC 3/8 x 16	30 x 11	<a href="#">23218</a>	UNC 1" x 8	55 x 22	<a href="#">23238</a>
UNC 7/16 x 14	38 x 14	<a href="#">23220</a>			



## Round dies

DIN 223 (DIN EN 22568) HSS-G - UNC

Type of thread: Unified Coarse thread ANSI B 1.1

Variants (28):

**Application:** > non abrasive material up to 800 N/mm<sup>2</sup> > unalloyed and low alloyed steel

D - mm	Ø - o / d	Art.-No.	D - mm	Ø - o / d	Art.-No.
UNC Nr. 1 x 64	16 x 5	<a href="#">23401</a>	UNC 9/16 x 12	38 x 14	<a href="#">23424</a>
UNC Nr. 2 x 56	16 x 5	<a href="#">23402</a>	UNC 5/8 x 11	45 x 18	<a href="#">23426</a>
UNC Nr. 3 x 48	16 x 5	<a href="#">23403</a>	UNC 3/4 x 10	45 x 18	<a href="#">23430</a>
UNC Nr. 4 x 40	20 x 5	<a href="#">23404</a>	UNC 7/8 x 9	55 x 22	<a href="#">23434</a>
UNC Nr. 5 x 40	20 x 5	<a href="#">23405</a>	UNC 1" x 8	55 x 22	<a href="#">23438</a>
UNC Nr. 6 x 32	20 x 7	<a href="#">23406</a>	UNC 1.1/8 x 7	65 x 25	<a href="#">23442</a>
UNC Nr. 8 x 32	20 x 7	<a href="#">23408</a>	UNC 1.1/4 x 7	65 x 25	<a href="#">23446</a>
UNC Nr. 10 x 24	20 x 7	<a href="#">23410</a>	UNC 1.3/8 x 6	65 x 25	<a href="#">23450</a>
UNC Nr. 12 x 2	20 x 7	<a href="#">23412</a>	UNC 1.1/2 x 6	65 x 25	<a href="#">23452</a>
UNC 1/4 x 20	20 x 7	<a href="#">23414</a>	UNC 1.1/2 x 6	75 x 30	<a href="#">23454</a>
UNC 5/16 x 18	25 x 9	<a href="#">23416</a>	UNC 1.5/8 x 5	75 x 30	<a href="#">23458</a>
UNC 3/8 x 16	30 x 11	<a href="#">23418</a>	UNC 1.3/4 x 5	90 x 36	<a href="#">23462</a>
UNC 7/16 x 14	30 x 11	<a href="#">23420</a>	UNC 1.7/8 x 4.1/2	90 x 36	<a href="#">23466</a>
UNC 1/2 x 13	38 x 14	<a href="#">23422</a>	UNC 2" x 4.1/2	90 x 36	<a href="#">23470</a>





## UNF - UNEF



### Hexagon die nuts (set of 5 pcs.) (49540)

DIN standard HSS UNF 1/4 - UNF 1/2

Type of thread	Standard	Material	Packing	Size
Unified Fine thread ANSI B 1.1	DIN standard	HSS-G	in metal case	Diameter UNF 1/4 - 1/2

#### Application:

- › for cleaning and repairing damaged threads and for general use in awkward places.
- › non abrasive material up to 800 N/mm<sup>2</sup>
- › unalloyed and low alloyed steel
- › small, handy set for standard application
- › the most popular diameter together in one case
- › Hexagon die nuts acc. to DIN 382

All threading tools, threading tool holder and accessories can also be ordered separately

#### Contents:

#### Art. -No.

1x HSS Hexagon die nut UNF 1/4	<a href="#">24114</a>
1x HSS Hexagon die nut UNF 5/16	<a href="#">24116</a>
1x HSS Hexagon die nut UNF 3/8	<a href="#">24118</a>
1x HSS Hexagon die nut UNF 7/16	<a href="#">24120</a>
1x HSS Hexagon die nut UNF 1/2	<a href="#">24122</a>



### Hexagon die nuts

DIN 382 HSS - UNF

Type of thread: Unified Fine thread ANSI B 1.1

Variants (14):

**Application:** For cleaning and repairing damaged threads and for general use in awkward places.

D - mm	Width across flats	Art.-No.	D - mm	Width across flats	Art.-No.
UNF 1/4 x 28	19 x 7	<a href="#">24114</a>	UNF 3/4 x 16	41 x 14	<a href="#">24130</a>
UNF 5/16 x 24	22 x 9	<a href="#">24116</a>	UNF 7/8 x 14	50 x 16	<a href="#">24134</a>
UNF 3/8 x 24	27 x 11	<a href="#">24118</a>	UNF 1" x 12	50 x 16	<a href="#">24138</a>
UNF 7/16 x 20	27 x 11	<a href="#">24120</a>	UNF 1.1/8 x 12	60 x 18	<a href="#">24142</a>
UNF 1/2 x 20	36 x 10	<a href="#">24122</a>	UNF 1.1/4 x 12	60 x 18	<a href="#">24146</a>
UNF 9/16 x 18	36 x 10	<a href="#">24124</a>	UNF 1.3/8 x 12	60 x 18	<a href="#">24150</a>
UNF 5/8 x 18	41 x 14	<a href="#">24126</a>	UNF 1.1/2 x 12	70 x 20	<a href="#">24154</a>



## Round dies

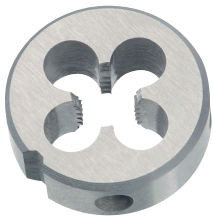
DIN 223 (DIN EN 22568) HSS-G - UNF

Type of thread: Unified Fine thread ANSI B 1.1

Variants (26):

**Application:** > non abrasive material up to 800 N/mm<sup>2</sup> > unalloyed and low alloyed steel

D - mm	Ø - o / d	Art.-No.	D - mm	Ø - o / d	Art.-No.
UNF Nr. 0 x 80	16 x 5	<a href="#">24400</a>	UNF 7/16 x 20	30 x 11	<a href="#">24420</a>
UNF Nr. 1 x 72	16 x 5	<a href="#">24401</a>	UNF 1/2 x 20	38 x 10	<a href="#">24422</a>
UNF Nr. 2 x 64	16 x 5	<a href="#">24402</a>	UNF 9/16 x 18	38 x 10	<a href="#">24424</a>
UNF Nr. 3 x 56	16 x 5	<a href="#">24403</a>	UNF 5/8 x 18	45 x 14	<a href="#">24426</a>
UNF Nr. 4 x 48	20 x 5	<a href="#">24404</a>	UNF 3/4 x 16	45 x 14	<a href="#">24430</a>
UNF Nr. 5 x 44	20 x 5	<a href="#">24405</a>	UNF 7/8 x 14	55 x 16	<a href="#">24434</a>
UNF Nr. 6 x 40	20 x 5	<a href="#">24406</a>	UNF 1" x 12	55 x 16	<a href="#">24438</a>
UNF Nr. 8 x 36	20 x 7	<a href="#">24408</a>	UNF 1" x 14	55 x 16	<a href="#">24440</a>
UNF Nr. 10 x 32	20 x 7	<a href="#">24410</a>	UNF 1.1/8 x 12	65 x 18	<a href="#">24442</a>
UNF Nr. 12 x 28	20 x 7	<a href="#">24412</a>	UNF 1.1/4 x 12	65 x 18	<a href="#">24446</a>
UNF 1/4 x 28	20 x 7	<a href="#">24414</a>	UNF 1.3/8 x 12	65 x 18	<a href="#">24450</a>
UNF 5/16 x 24	25 x 9	<a href="#">24416</a>	UNF 1.1/2 x 12	65 x 18	<a href="#">24452</a>
UNF 3/8 x 24	30 x 11	<a href="#">24418</a>	UNF 1.1/2 x 12	75 x 20	<a href="#">24454</a>



## Round dies, left hand

DIN 223 (DIN EN 22568) HSS-G - UNF LH

Type of thread: Unified Fine thread ANSI B 1.1

Variants (11):

**Application:** > non abrasive material up to 800 N/mm<sup>2</sup> > unalloyed and low alloyed steel

D - mm	Ø - o / d	Art.-No.	D - mm	Ø - o / d	Art.-No.
UNF Nr. 10 x 32	20 x 7	<a href="#">24210</a>	UNF 9/16 x 18	38 x 10	<a href="#">24224</a>
UNF 1/4 x 28	20 x 7	<a href="#">24214</a>	UNF 5/8 x 18	45 x 14	<a href="#">24226</a>
UNF 5/16 x 24	25 x 9	<a href="#">24216</a>	UNF 3/4 x 16	45 x 14	<a href="#">24230</a>
UNF 3/8 x 24	30 x 11	<a href="#">24218</a>	UNF 7/8 x 14	55 x 16	<a href="#">24234</a>
UNF 7/16 x 20	30 x 11	<a href="#">24220</a>	UNF 1" x 12	55 x 16	<a href="#">24238</a>
UNF 1/2 x 20	38 x 10	<a href="#">24222</a>			



## Round dies

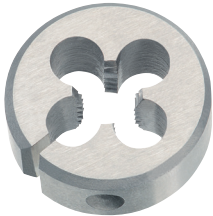
DIN 223 (DIN EN 22568) HSS-G - UNEF

Type of thread: Unified Extra Fine thread ANSI B 1.1

Variants (22):

**Application:** > non abrasive material up to 800 N/mm<sup>2</sup> > unalloyed and low alloyed steel

D - mm	Ø - o / d	Art.-No.	D - mm	Ø - o / d	Art.-No.
UNEF Nr. 12 x 32	20 x 7	<a href="#">24612</a>	UNEF 7/8 x 20	55 x 16	<a href="#">24635</a>
UNEF 1/4 x 32	20 x 7	<a href="#">24614</a>	UNEF 15/16 x 20	55 x 16	<a href="#">24636</a>
UNEF 5/16 x 32	25 x 9	<a href="#">24615</a>	UNEF 1" x 20	55 x 16	<a href="#">24637</a>
UNEF 3/8 x 32	30 x 11	<a href="#">24616</a>	UNEF 1.1/16 x 18	65 x 18	<a href="#">24645</a>
UNEF 7/16 x 28	30 x 11	<a href="#">24620</a>	UNEF 1.1/8 x 18	65 x 18	<a href="#">24645</a>
UNEF 1/2 x 28	38 x 10	<a href="#">24621</a>	UNEF 1.3/16 x 18	65 x 18	<a href="#">24647</a>
UNEF 9/16 x 24	38 x 10	<a href="#">24625</a>	UNEF 1.1/4 x 18	65 x 18	<a href="#">24648</a>
UNEF 5/8 x 24	45 x 14	<a href="#">24626</a>	UNEF 1.5/16 x 18	65 x 18	<a href="#">24649</a>
UNEF 11/16 x 24	45 x 14	<a href="#">24627</a>	UNEF 1.3/8 x 18	65 x 18	<a href="#">24650</a>
UNEF 3/4 x 20	45 x 14	<a href="#">24633</a>	UNEF 1.7/16 x 18	75 x 20	<a href="#">24651</a>
UNEF 13/16 x 20	55 x 16	<a href="#">24634</a>	UNEF 1.1/2 x 18	75 x 20	<a href="#">24652</a>



## Round dies

BS 1127; 1950 HSS - UNF

Type of thread: Unified Fine thread ANSI B 1.1

Variants (35):

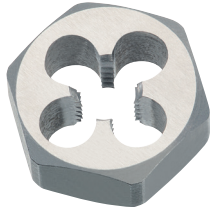
**Application:** > non abrasive material up to 800 N/mm<sup>2</sup> > unalloyed and low alloyed steel

D - mm	Ø - o / d	L1 width	Art.-No.	D - mm	Ø - o / d	L1 width	Art.-No.	D - mm	Ø - o / d	L1 width	Art.-No.
UNF 4 x 48	13/16	1/4	<a href="#">83004</a>	UNF 3/8 x 24	1.5/16	7/16	<a href="#">83032</a>	UNF 7/8 x 14	2"	5/8	<a href="#">83054</a>
UNF 5 x 44	13/16	1/4	<a href="#">83005</a>	UNF 7/16 x 20	1.5/16	7/16	<a href="#">83033</a>	UNF 1" x 12	2"	5/8	<a href="#">83055</a>
UNF 6 x 40	13/16	1/4	<a href="#">83006</a>	UNF 1/2 x 20	1.5/16	7/16	<a href="#">83034</a>	UNF 1" x 14	2"	5/8	<a href="#">83056</a>
UNF 8 x 36	13/16	1/4	<a href="#">83008</a>	UNF 9/16 x 18	1.5/16	7/16	<a href="#">83035</a>	UNF 1.1/8 x 12	3"	7/8	<a href="#">83057</a>
UNF 10 x 32	13/16	1/4	<a href="#">83010</a>	UNF 3/8 x 24	1.1/2	1/2	<a href="#">83040</a>	UNF 1.1/4 x 12	3"	7/8	<a href="#">83059</a>
UNF 12 x 28	13/16	1/4	<a href="#">83012</a>	UNF 7/16 x 20	1.1/2	1/2	<a href="#">83041</a>	UNF 1.3/8 x 12	3"	7/8	<a href="#">83061</a>
UNF 1/4 x 28	13/16	3/8	<a href="#">83013</a>	UNF 1/2 x 20	1.1/2	1/2	<a href="#">83042</a>	UNF 1.1/2 x 12	3"	7/8	<a href="#">83063</a>
UNF 1/4 x 28	1"	3/8	<a href="#">83020</a>	UNF 9/16 x 18	1.1/2	1/2	<a href="#">83043</a>				
UNF 5/16 x 24	1"	3/8	<a href="#">83021</a>	UNF 5/8 x 18	1.1/2	1/2	<a href="#">83044</a>				
UNF 3/8 x 24	1"	3/8	<a href="#">83022</a>	UNF 3/4 x 16	1.1/2	1/2	<a href="#">83045</a>				
UNF 7/16 x 20	1"	3/8	<a href="#">83023</a>	UNF 1/2 x 20	2"	5/8	<a href="#">83050</a>				
UNF 1/2 x 20	1.5/16	3/8	<a href="#">83024</a>	UNF 9/16 x 18	2"	5/8	<a href="#">83051</a>				
UNF 1/4 x 28	1.5/16	7/16	<a href="#">83030</a>	UNF 5/8 x 18	2"	5/8	<a href="#">83052</a>				
UNF 5/16 x 24	1.5/16	7/16	<a href="#">83031</a>	UNF 3/4 x 16	2"	5/8	<a href="#">83053</a>				

D = Nominal Diameter    o / d = Outer Diameter    L1 = Overall Length



## 8 - UN



### Hexagon die nuts

DIN 382 HSS - UNx8

Type of thread: Unified thread ANSI B 1.1

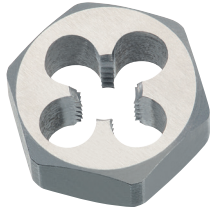
Variants (11):

**Application:** For cleaning and repairing damaged threads and for general use in awkward places.

D - mm	Width across flats	Art.-No.	D - mm	Width across flats	Art.-No.
UN 1.1/8 x 8	60 x 25	<a href="#">24171</a>	UN 1.7/8 x 8	85 x 22	<a href="#">24177</a>
UN 1.1/4 x 8	60 x 25	<a href="#">24172</a>	UN 2" x 8	85 x 22	<a href="#">24178</a>
UN 1.3/8 x 8	60 x 25	<a href="#">24173</a>	UN 2.1/8 x 8	85 x 22	<a href="#">24179</a>
UN 1.1/2 x 8	70 x 30	<a href="#">24174</a>	UN 2.1/4 x 8	100 x 22	<a href="#">24180</a>
UN 1.5/8 x 8	70 x 30	<a href="#">24175</a>	UN 2.1/2 x 8	115 x 22	<a href="#">24181</a>
UN 1.3/4 x 8	85 x 36	<a href="#">24176</a>			



## G (BSP) - G (BSPF)



### Hexagon die nuts + left hand

DIN 382 HSS - G (BSP) + left hand DIN 382 HSS - G (BSP) LH

Type of thread: Pipe-thread DIN ISO 228

Variants (15/13):

**Application:** For cleaning and repairing damaged threads and for general use in awkward places.

D - mm	Width across flats	Art.-No.	Art.-No. LH	D - mm	Width across flats	Art.-No.	Art.-No. LH
G 1/8 x 28	27 x 11	<a href="#">25512</a>	<a href="#">25612</a>	G 1.1/8 x 11	70 x 20	<a href="#">25530</a>	<a href="#">25630</a>
G 1/4 x 19	36 x 10	<a href="#">25514</a>	<a href="#">25614</a>	G 1.1/4 x 11	70 x 20	<a href="#">25534</a>	<a href="#">25634</a>
G 3/8 x 19	41 x 14	<a href="#">25516</a>	<a href="#">25616</a>	G 1.3/8 x 11	85 x 22	<a href="#">25538</a>	<a href="#">25638</a>
G 1/2 x 14	41 x 14	<a href="#">25518</a>	<a href="#">25618</a>	G 1.1/2 x 11	85 x 22	<a href="#">25542</a>	<a href="#">25642</a>
G 5/8 x 14	50 x 16	<a href="#">25520</a>	<a href="#">25620</a>	G 1.5/8 x 11	85 x 22	<a href="#">25546</a>	-
G 3/4 x 14	50 x 16	<a href="#">25522</a>	<a href="#">25622</a>	G 1.3/4 x 11	100 x 22	<a href="#">25550</a>	<a href="#">25650</a>
G 7/8 x 14	60 x 18	<a href="#">25524</a>	-	G 2" x 11	100 x 22	<a href="#">25554</a>	<a href="#">25654</a>
G 1" x 11	60 x 18	<a href="#">25526</a>	<a href="#">25626</a>				



### Round dies gun nosed

DIN 5158 (DIN EN 24231) HSS-E - G (BSP)

Type of thread: Pipe-thread DIN ISO 228

Variants (6):

#### Advantages:

- › high cutting ability
- › easy cut
- › uninterrupted swarf flow in direction of feed
- › prevents jamming of swarf

#### Application:

- › abrasive material up to 1200 N/mm<sup>2</sup>
- › stainless steel
- › and for general use

D - mm	Ø - o / d	Art.-No.
G 1/8 x 28	30 x 11	<a href="#">55412</a>
G 1/4 x 19	38 x 10	<a href="#">55414</a>
G 3/8 x 19	45 x 14	<a href="#">55416</a>
G 1/2 x 14	45 x 14	<a href="#">55418</a>
G 3/4 x 14	55 x 16	<a href="#">55422</a>
G 1" x 11	65 x 18	<a href="#">55426</a>



## Round dies

DIN 5158 (DIN EN 24231) HSS-G - G (BSP)

Type of thread: Pipe-thread DIN ISO 228

Variants (22):

**Application:** > non abrasive material up to 800 N/mm<sup>2</sup> > unalloyed and low alloyed steel

D - mm	Ø - o / d	Art.-No.	D - mm	Ø - o / d	Art.-No.
G 1/8 x 28	30 x 11	<a href="#">25412</a>	G 1.1/2 x 11	90 x 22	<a href="#">25442</a>
G 1/4 x 19	38 x 10	<a href="#">25414</a>	G 1.5/8 x 11	90 x 22	<a href="#">25446</a>
G 3/8 x 19	45 x 14	<a href="#">25416</a>	G 1.3/4 x 11	105 x 22	<a href="#">25450</a>
G 1/2 x 14	45 x 14	<a href="#">25418</a>	G 2" x 11	90 x 22	<a href="#">25452</a>
G 5/8 x 14	55 x 16	<a href="#">25420</a>	G 2" x 11	105 x 22	<a href="#">25454</a>
G 3/4 x 14	55 x 16	<a href="#">25422</a>	G 2.1/4 x 11	120 x 22	<a href="#">25458</a>
G 7/8 x 14	65 x 18	<a href="#">25424</a>	G 2.1/2 x 11	120 x 22	<a href="#">25462</a>
G 1" x 11	65 x 18	<a href="#">25426</a>	G 2.3/4 x 11	120 x 22	<a href="#">25466</a>
G 1.1/8 x 11	75 x 20	<a href="#">25430</a>	G 3" x 11	130 x 25	<a href="#">25470</a>
G 1.1/4 x 11	75 x 20	<a href="#">25434</a>	G 3.1/2 x 11	150 x 25	<a href="#">25474</a>
G 1.3/8 x 11	90 x 22	<a href="#">25438</a>	G 4" x 11	160 x 25	<a href="#">25478</a>



## Round dies, left hand

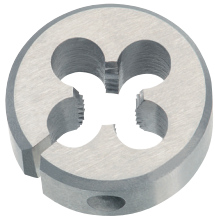
DIN 5158 (DIN EN 24231) HSS-G - G (BSP) LH

Type of thread: Pipe-thread DIN ISO 228

Variants (15):

**Application:** > non abrasive material up to 800 N/mm<sup>2</sup> > unalloyed and low alloyed steel

D - mm	Width across flats	Art.-No.	D - mm	Width across flats	Art.-No.
G 1/8 x 28	30 x 11	<a href="#">25212</a>	G 1.1/8 x 11	75 x 20	<a href="#">25230</a>
G 1/4 x 19	38 x 10	<a href="#">25214</a>	G 1.1/4 x 11	75 x 20	<a href="#">25234</a>
G 3/8 x 19	45 x 14	<a href="#">25216</a>	G 1.3/8 x 11	90 x 22	<a href="#">25238</a>
G 1/2 x 14	45 x 14	<a href="#">25218</a>	G 1.1/2 x 11	90 x 22	<a href="#">25242</a>
G 5/8 x 14	55 x 16	<a href="#">25220</a>	G 1.5/8 x 11	90 x 22	<a href="#">25246</a>
G 3/4 x 14	55 x 16	<a href="#">25222</a>	G 1.3/4 x 11	105 x 22	<a href="#">25250</a>
G 7/8 x 14	65 x 18	<a href="#">25224</a>	G 2" x 11	105 x 22	<a href="#">25254</a>
G 1" x 11	65 x 18	<a href="#">25226</a>			



## Round dies

BS 1127; 1950 HSS - G (BSPF)

Type of thread: Pipe-thread DIN ISO 228

Variants (20):

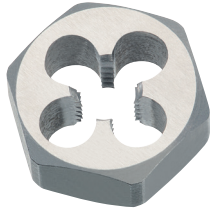
**Application:** > non abrasive material up to 800 N/mm<sup>2</sup> > unalloyed and low alloyed steel

D - mm	Ø - o / d	L1	Art.-No.	D - mm	Ø - o / d	L1	Art.-No.
G 1/8 x 28	1"	3/8 width	<a href="#">86004</a>	G 5/8 x 14	2"	5/8 width	<a href="#">86033</a>
G 1/8 x 28	1.5/16	7/16 width	<a href="#">86012</a>	G 3/4 x 14	2"	5/8 width	<a href="#">86034</a>
G 1/4 x 19	1.5/16	7/16 width	<a href="#">86014</a>	G 3/8 x 19	2.1/4	11/16 width	<a href="#">86040</a>
G 1/8 x 28	1.1/2	1/2 width	<a href="#">86020</a>	G 3/4 x 14	2.1/4	11/16 width	<a href="#">86041</a>
G 1/4 x 19	1.1/2	1/2 width	<a href="#">86022</a>	G 7/8 x 14	2.1/4	11/16 width	<a href="#">86042</a>
G 3/8 x 19	1.1/2	1/2 width	<a href="#">86024</a>	G 1 x 11	2.1/4	11/16 width	<a href="#">86043</a>
G 1/2 x 19	1.1/2	1/2 width	<a href="#">86026</a>	G 1 x 11	3"	7/8 width	<a href="#">86050</a>
G 1/4 x 19	2"	5/8 width	<a href="#">86030</a>	G 1.1/4 x 11	3"	7/8 width	<a href="#">86054</a>
G 3/8 x 19	2"	5/8 width	<a href="#">86031</a>	G 1.1/2 x 11	4"	1 width	<a href="#">86060</a>
G 1/2 x 14	2"	5/8 width	<a href="#">86032</a>	G 2 x 11	4"	1 width	<a href="#">86064</a>





## NPT - NPTF - NPS



### Hexagon die nuts

DIN 382 HSS - NPT

Type of thread: american tapered pipe thread, taper 1:16

Variants (10):

**Application:** For cleaning and repairing damaged threads and for general use in awkward places.

D - mm		Width across flats	Art.-No.
NPT	1/16 x 27	22 x 9	<a href="#">23510</a>
NPT	1/8 x 27	27 x 11	<a href="#">23512</a>
NPT	1/4 x 18	36 x 14	<a href="#">23514</a>
NPT	3/8 x 18	41 x 14	<a href="#">23516</a>
NPT	1/2 x 14	50 x 16	<a href="#">23518</a>

D - mm		Width across flats	Art.-No.
NPT	3/4 x 14	60 x 18	<a href="#">23522</a>
NPT	1" x 11.5	60 x 25	<a href="#">23526</a>
NPT	1.1/4 x 11.5	70 x 25	<a href="#">23528</a>
NPT	1.1/2 x 11.5	85 x 28	<a href="#">23530</a>
NPT	2" x 11.5	100 x 28	23554



### Round dies

HSS-G - NPT + split Form A HSS-G - NPTF

Type of thread: american tapered pipe thread, taper 1:16

Variants (12/6):

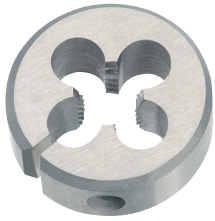
**Application:** > non abrasive material up to 800 N/mm<sup>2</sup> > unalloyed and low alloyed steel



D - mm		Ø - o / d	Art.-No.
NPT	1/16 x 27	25 x 9	<a href="#">23610</a>
NPT	1/8 x 27	30 x 11	<a href="#">23612</a>
NPT	1/4 x 18	38 x 14	<a href="#">23614</a>
NPT	3/8 x 18	45 x 14	<a href="#">23616</a>
NPT	1/2 x 14	45 x 18	<a href="#">23618</a>
NPT	5/8 x 14	55 x 22	<a href="#">23620</a>
NPT	3/4 x 14	55 x 22	<a href="#">23622</a>
NPT	7/8 x 14	65 x 25	<a href="#">23624</a>
NPT	1" x 11.5	65 x 25	<a href="#">23626</a>
NPT	1.1/4 x 11.5	75 x 26	<a href="#">23634</a>
NPT	1.1/2 x 11.5	90 x 27	<a href="#">23642</a>
NPT	2" x 11.5	105 x 28	<a href="#">23654</a>



D - mm		Ø - o / d	Art.-No.
Form A			
NPT	1/8 x 27	50 x 11	<a href="#">98072</a>
NPT	1/4 x 18	50 x 14	<a href="#">98074</a>
NPT	3/8 x 18	50 x 14	<a href="#">98076</a>
NPT	1/2 x 14	50 x 18	<a href="#">98078</a>
NPT	3/4 x 14	50 x 22	<a href="#">98080</a>
NPT	1" x 11.5	50 x 25	<a href="#">98082</a>



## Round dies

JIS B-4451 HSS - NPT + JIS B-4451 HSS - NPS

Type of thread: american tapered pipe thread, taper 1:16

Variants (14/6):

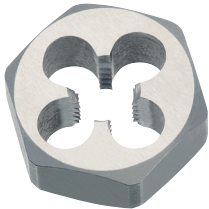
**Application:** > non abrasive material up to 800 N/mm<sup>2</sup> > unalloyed and low alloyed steel

D - mm	Ø - o / d	Art.-No.
NPT 1/8	38	<a href="#">98006</a>
NPT 1/8	50	<a href="#">98008</a>
NPT 1/4	38	<a href="#">98014</a>
NPT 1/4	50	<a href="#">98016</a>
NPT 3/8	38	<a href="#">98018</a>
NPT 3/8	50	<a href="#">98020</a>
NPT 1/2	38	<a href="#">98022</a>
NPT 3/4	50	<a href="#">98030</a>
NPT 3/4	38	<a href="#">98032</a>
NPT 1"	50	<a href="#">98038</a>
NPT 1"	38	<a href="#">98040</a>
NPT 1"	50	<a href="#">98042</a>
NPT 1.1/4	38	<a href="#">98046</a>
NPT 1.1/4	50	<a href="#">98048</a>

D - mm	Ø - o / d	Art.-No.
NPS 1/8	50	<a href="#">99008</a>
NPS 1/4	50	<a href="#">99016</a>
NPS 3/8	50	<a href="#">99020</a>
NPS 1/2	50	<a href="#">99022</a>
NPS 3/4	50	<a href="#">99030</a>
NPS 1"	50	<a href="#">99038</a>



## R (BSPT) Rp (BSPP) - PF - PT



### Hexagon die nuts

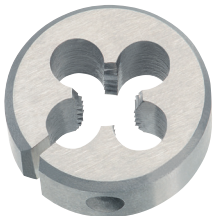
DIN 382 HSS - R (BSPT)

Type of thread: tapered pipe thread, taper 1:16, con. 55°

Variants (9):

**Application:** For cleaning and repairing damaged threads and for general use in awkward places.

D - mm		Width across flats	Art.-No.	D - mm		Width across flats	Art.-No.
R	1/8 x 28	27 x 11	<a href="#">23562</a>	R	1" x 11	60 x 25	<a href="#">23576</a>
R	1/4 x 19	36 x 14	<a href="#">23564</a>	R	1.1/4 x 11	85 x 26	<a href="#">23578</a>
R	3/8 x 19	41 x 15	<a href="#">23566</a>	R	1.1/2 x 11	85 x 26	<a href="#">23580</a>
R	1/2 x 14	50 x 19	<a href="#">23568</a>	R	2" x 11	100 x 31	<a href="#">23584</a>
R	3/4 x 14	60 x 20	<a href="#">23572</a>				



### Round dies

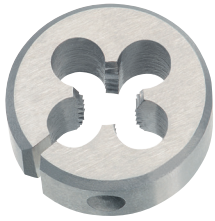
split Form A HSS-G - R (BSPT)

Type of thread: tapered pipe thread, taper 1:16, con. 55°

Variants (7):

**Application:** > non abrasive material up to 800 N/mm<sup>2</sup> > unalloyed and low alloyed steel

D - mm		Ø - o / d	Art.-No.
PT	1/8 x 28	38 x 11	<a href="#">97006</a>
PT	1/4 x 19	38 x 16	<a href="#">97014</a>
PT	3/8 x 19	50 x 18	<a href="#">97020</a>
PT	1/2 x 14	50 x 22	<a href="#">97022</a>
PT	3/4 x 14	50 x 24	<a href="#">97030</a>
PT	1" x 11	63 x 28	<a href="#">97040</a>
PT	1.1/4 x 11	75 x 32	<a href="#">97048</a>



## Round dies

JIS B-4451 HSS - Rp (BSPP)  
 + JIS B-4451 HSS - PF  
 + JIS B-4451 HSS - PT

Type of thread: Pipe-thread ISO 7-1  
 Pipe-thread DIN ISO 228  
 tapered pipe thread, taper 1:16, con. 55°

### Variants (6/14/10):

**Application:** > non abrasive material up to 800 N/mm<sup>2</sup> > unalloyed and low alloyed steel

D - mm	Ø - o / d	Art.-No.	D - mm	Ø - o / d	Art.-No.	D - mm	Ø - o / d	Art.-No.
PS 1/8	50	<a href="#">95008</a>	PF 1/8	38	<a href="#">96006</a>	PT 1/8	50	<a href="#">97008</a>
PS 1/4	50	<a href="#">95016</a>	PF 1/8	50	<a href="#">96008</a>	PT 1/4	50	<a href="#">97016</a>
PS 3/8	50	<a href="#">95020</a>	PF 1/4	38	<a href="#">96014</a>	PT 3/8	38	<a href="#">97018</a>
PS 1/2	50	<a href="#">95022</a>	PF 1/4	50	<a href="#">96016</a>	PT 5/8	55	<a href="#">97026</a>
PS 3/4	50	<a href="#">95030</a>	PF 3/8	38	<a href="#">96018</a>	PT 3/4	65	<a href="#">97032</a>
PS 1"	50	<a href="#">95038</a>	PF 3/8	50	<a href="#">96020</a>	PT 7/8	65	<a href="#">97036</a>
			PF 1/2	50	<a href="#">96022</a>	PT 1"	50	<a href="#">97038</a>
			PF 3/4	50	<a href="#">96030</a>	PT 1"	75	<a href="#">97042</a>
			PF 3/4	65	<a href="#">96032</a>	PT 1.1/4	65	<a href="#">97046</a>
			PF 1"	50	<a href="#">96038</a>	PT 1.1/2	90	<a href="#">97054</a>
			PF 1"	65	<a href="#">96040</a>			
			PF 1"	75	<a href="#">96042</a>			
			PF 1.1/4	65	<a href="#">96046</a>			
			PF 1.1/4	75	<a href="#">96048</a>			



## FG - BSC



### Round dies

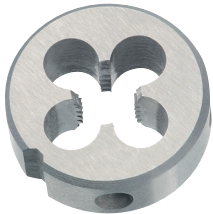
DIN 223 (DIN EN 22568) HSS - FG

Type of thread: Cycle Thread DIN 790012

Variants (9):

**Application:** > non abrasive material up to 800 N/mm<sup>2</sup> > unalloyed and low alloyed steel

D - mm	Ø - o / d	Art.-No.
FG 2 x 56	16 x 5	<a href="#">79301</a>
FG 2.3 x 56	16 x 5	<a href="#">79302</a>
FG 2.6 x 56	16 x 5	<a href="#">79303</a>
FG 6.35 x 26	20 x 7	<a href="#">79304</a>
FG 7.9 x 26	25 x 9	<a href="#">79305</a>
FG 9.5 x 26	30 x 11	<a href="#">79306</a>
FG 14.3 x 20	38 x 10	<a href="#">79307</a>
FG 14.3 x 20 - LH	38 x 10	<a href="#">79308</a>
FG 25.4 x 24	55 x 16	<a href="#">79309</a>



### Round dies

DIN 223 (DIN EN 22568) HSS - BSC

Type of thread: Cycle Thread DIN 790012

Variants (6):

**Application:** > non abrasive material up to 800 N/mm<sup>2</sup> > unalloyed and low alloyed steel

D - mm	Ø - o / d	Art.-No.
BSC 1/4 x 26	20 x 7	<a href="#">79320</a>
BSC 5/16 x 26	25 x 9	<a href="#">79321</a>
BSC 3/8 x 26	30 x 11	<a href="#">79322</a>
BSC 9/16 x 20	38 x 10	<a href="#">79323</a>
BSC 9/16 x 20 - LH	38 x 10	<a href="#">79324</a>
BSC 1" x 24	55 x 16	<a href="#">79325</a>



PG



## Round dies

DIN 40434 HSS-G - PG

Type of thread: armoured tube thread DIN 40 430

Variants (10):

**Application:** > non abrasive material up to 800 N/mm<sup>2</sup> > unalloyed and low alloyed steel

D - mm	Ø - o / d	Art.-No.
PG 7 x 20	38 x 10	<a href="#">25807</a>
PG 9 x 18	45 x 14	<a href="#">25809</a>
PG 11 x 18	45 x 14	<a href="#">25811</a>
PG 13.5 x 18	45 x 14	<a href="#">25813</a>
PG 16 x 18	55 x 16	<a href="#">25816</a>
PG 21 x 16	65 x 18	<a href="#">25821</a>
PG 29 x 16	65 x 18	<a href="#">25829</a>
PG 36 x 16	90 x 22	<a href="#">25836</a>
PG 42 x 16	105 x 22	<a href="#">25842</a>
PG 48 x 16	105 x 22	<a href="#">25848</a>



Vg



**Round dies**

DIN 223 (DIN EN 22568) HSS - Vg

Type of thread: Valve Thread DIN 7756

Variants (6):

**Application:** > non abrasive material up to 800 N/mm<sup>2</sup> > unalloyed and low alloyed steel

D - mm	Ø - o / d	Art.-No.
VG 5 x 36	20 x 7	<a href="#">79330</a>
VG 5.2 x 24	20 x 7	<a href="#">79331</a>
VG 6 x 32	20 x 7	<a href="#">79332</a>
VG 8 x 32	25 x 9	<a href="#">79333</a>
VG 10 x 28	30 x 11	<a href="#">79334</a>
VG 12 x 26	30 x 11	<a href="#">79335</a>